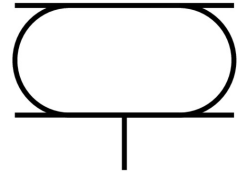



# Bellow cylinder EB-145-60

Part number: 36486

FESTO



 [General operating condition](#)

## Data sheet

Feature	Value
Size	145
Required installation Ø	160 mm
Stroke	60 mm
Max. height, advanced	110 mm
Max. angle of inclination	20 deg
Max. offset	10 mm
Min. installation height	50 mm
Mode of operation	Single-acting
Symbol	00991205
Operating pressure	0 bar ... 8 bar
Operating medium	Compressed air as per ISO 8573-1:2010 [:-:4]
Information on operating and pilot media	Operation with oil lubrication not possible
Corrosion resistance class (CRC)	2 - Moderate corrosion stress
LABS (PWIS) conformity	VDMA24364-B1/B2-L
Ambient temperature	-40 °C ... 70 °C
Resetting force	120 N
Product weight	900 g
Type of mounting	With internal thread
Pneumatic connection	G1/8
Note on materials	RoHS-compliant
Bellows material	NR/BR
Housing material	Steel Galvanized