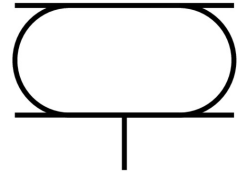


Bellow cylinder EB-165-125

Part number: 36491

FESTO



[PDF](#) General operating condition

Data sheet

Feature	Value
Size	165
Required installation Ø	180 mm
Stroke	125 mm
Max. height, advanced	200 mm
Max. angle of inclination	30 deg
Max. offset	20 mm
Min. installation height	72 mm
Mode of operation	Single-acting
Symbol	00991205
Operating pressure	0 bar ... 8 bar
Operating medium	Compressed air as per ISO 8573-1:2010 [:-:4]
Information on operating and pilot media	Operation with oil lubrication not possible
Corrosion resistance class (CRC)	2 - Moderate corrosion stress
LABS (PWIS) conformity	VDMA24364-B1/B2-L
Ambient temperature	-40 °C ... 70 °C
Resetting force	200 N
Product weight	1500 g
Type of mounting	With internal thread
Pneumatic connection	G1/4
Note on materials	RoHS-compliant
Bellows material	NR/BR
Housing material	Steel Galvanized