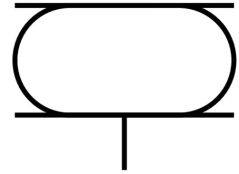


# Bellow cylinder EB-325-215

Part number: 193790

FESTO



[PDF](#) General operating condition

## Data sheet

| Feature                                  | Value  |
|--|--|
| Size                                     | 325  |
| Required installation Ø                  | 340 mm                                       |
| Stroke                                   | 215 mm                                       |
| Max. height, advanced                    | 305 mm                                       |
| Max. angle of inclination                | 20 deg                                       |
| Max. offset                              | 20 mm  |
| Min. installation height                 | 75 mm  |
| Mode of operation                        | Single-acting                                |
| Symbol                                   | 00991205                                     |
| Operating pressure                       | 0 bar ... 8 bar                              |
| Operating medium                         | Compressed air as per ISO 8573-1:2010 [:-:4] |
| Information on operating and pilot media | Operation with oil lubrication not possible  |
| Corrosion resistance class (CRC)         | 2 - Moderate corrosion stress                |
| LABS (PWIS) conformity                   | VDMA24364-B1/B2-L                            |
| Ambient temperature                      | -40 °C ... 70 °C                             |
| Resetting force                          | 300 N  |
| Product weight                           | 4800 g                                       |
| Type of mounting                         | With internal thread                         |
| Pneumatic connection                     | G1/4   |
| Note on materials                        | RoHS-compliant                               |
| Bellows material                         | NR/BR  |
| Housing material                         | Steel<br>Galvanized                          |