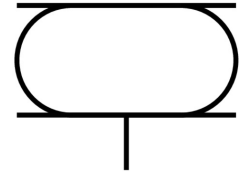


Bellow cylinder EB-385-230

Part number: 193791

FESTO



[PDF](#) General operating condition

Data sheet

| Feature | Value |
|--|--|
| Size | 385 |
| Required installation Ø | 400 mm |
| Stroke | 230 mm |
| Max. height, advanced | 310 mm |
| Max. angle of inclination | 20 deg |
| Max. offset | 20 mm |
| Min. installation height | 77 mm |
| Mode of operation | Single-acting |
| Symbol | 00991205 |
| Operating pressure | 0 bar ... 8 bar |
| Operating medium | Compressed air as per ISO 8573-1:2010 [:-:4] |
| Information on operating and pilot media | Operation with oil lubrication not possible |
| Corrosion resistance class (CRC) | 2 - Moderate corrosion stress |
| LABS (PWIS) conformity | VDMA24364-B1/B2-L |
| Ambient temperature | -40 °C ... 70 °C |
| Resetting force | 400 N |
| Product weight | 6900 g |
| Type of mounting | With internal thread |
| Pneumatic connection | G1/4 |
| Note on materials | RoHS-compliant |
| Bellows material | NR/BR |
| Housing material | Steel Galvanized |