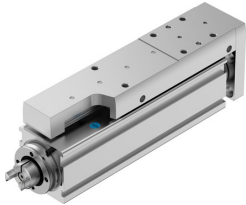


# Mini slide EGSC-BS-KF-25-50-2P

Part number: 8162070

FESTO



 [General operating condition](#)

## Data sheet

| Feature  | Value   |
|--|---|
| Working stroke                                     | 50 mm   |
| Size   | 25  |
| Stroke reserve                                     | 0 mm  |
| Reversing backlash                                 | 150 µm  |
| Screw diameter                                     | 6 mm  |
| Spindle pitch                                      | 2 mm/U  |
| Mounting position                                  | Any   |
| Guide  | Recirculating ball bearing guide  |
| Structural design                                  | Electrical mini-slide with ball screw drive   |
| Motor type   | Stepper motor<br>Servo motor  |
| Homing   | Fixed stop block positive<br>Fixed stop block, negative<br>Reference switch   |
| Spindle type                                       | Ball screw drive  |
| Symbol   | 00992069  |
| Position sensing                                   | For proximity sensor  |
| Max. acceleration                                  | 5 m/s <sup>2</sup>  |
| Max. speed   | 0.133 m/s   |
| Repetition accuracy                                | ±0.015 mm   |
| Duty cycle   | 100%  |
| Corrosion resistance class (CRC)                   | 0 - No corrosion stress   |
| LABS (PWIS) conformity                             | VDMA24364 zone III  |
| Suitability for the production of Li-ion batteries | Metals with more than 1% by mass of copper, zinc or nickel by mass are excluded from use. Exceptions are nickel in steel, chemically nickel-plated surfaces, printed circuit boards, cables, electrical plug connectors and coils |
| Cleanroom class                                    | Class 9 according to ISO 14644-1  |
| Noise level  | 45 dB(A)  |
| Degree of protection                               | IP40  |
| Ambient temperature                                | 0 °C ... 50 °C  |
| Fixed bearing dynamic basic load rating            | 2810 N  |
| Linear guide dynamic basic load rating             | 1310 N  |
| Dynamic basic load rating, ball screw drive        | 1900 N  |
| Max. force F <sub>y</sub>                          | 669 N   |
| Max. force F <sub>z</sub>                          | 669 N   |
| Max. torque M <sub>x</sub>                         | 2 Nm  |

| Feature  | Value   |
|--|---|
| Max. torque My                                 | 2.1 Nm  |
| Max. torque Mz                                 | 2.1 Nm  |
| Max. radial force on actuator shaft            | 30 N  |
| Max. feed force Fx                             | 20 N  |
| Guide value for payload, horizontal            | 2 kg  |
| Guide value for payload, vertical              | 2 kg  |
| Ball screw drive statistical basic load rating | 2800 N  |
| Linear guide statistical basic load rating     | 2440 N  |
| Mass moment of inertia JH per meter of stroke  | 0.00529 kgcm <sup>2</sup>   |
| Mass moment of inertia JL per kg of payload    | 0.00101 kgcm <sup>2</sup>   |
| Mass moment of inertia JO                      | 8.7E-4 kgcm <sup>2</sup>  |
| Feed constant                                  | 2 mm/U  |
| Statistical fixed bearing load rating          | 1340 N  |
| Reference service life                         | 5000 km   |
| Maintenance interval                           | Life-time lubrication   |
| Moving mass at 0 mm stroke                     | 83 g  |
| Additional moving mass per 10 mm stroke        | 9 g   |
| Product weight                                 | 269 g   |
| Basic weight with 0 mm stroke                  | 176 g   |
| Additional weight per 10 mm stroke             | 19 g  |
| Type of mounting                               | With internal thread<br>With centering sleeve<br>With accessories<br>With cylindrical pin |
| Interface code, actuator                       | V20   |
| Note on materials                              | RoHS-compliant  |
| Slide carriage material                        | Roller bearing steel  |
| Guide rail material                            | Roller bearing steel  |
| Housing material                               | Wrought aluminum alloy, anodized  |
| Material of yoke plate                         | Wrought aluminum alloy, anodized  |
| Piston rod material                            | High-alloy stainless steel  |
| Slide material                                 | Wrought aluminum alloy, anodized  |
| Spindle nut material                           | Roller bearing steel  |
| Spindle material                               | Roller bearing steel  |