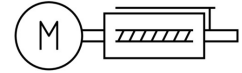
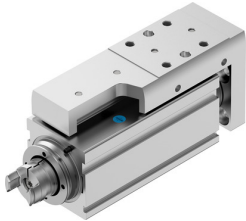


Mini slide EGSC-BS-KF-32-25-8P

Part number: 8048306

FESTO



 [General operating condition](#)

Data sheet

Feature	Value
Working stroke	25 mm
Size	32
Stroke reserve	0 mm
Reversing backlash	150 µm
Screw diameter	8 mm
Spindle pitch	8 mm/U
Mounting position	Any
Guide	Recirculating ball bearing guide
Structural design	Electrical mini-slide with ball screw drive
Motor type	Stepper motor Servo motor
Homing	Fixed stop block positive Fixed stop block, negative Reference switch
Spindle type	Ball screw drive
Symbol	00992069
Position sensing	For proximity sensor
Max. acceleration	15 m/s ²
Max. speed	0.5 m/s
Repetition accuracy	±0.015 mm
Duty cycle	100%
Corrosion resistance class (CRC)	0 - No corrosion stress
LABS (PWIS) conformity	VDMA24364 zone III
Suitability for the production of Li-ion batteries	Metals with more than 1% by mass of copper, zinc or nickel by mass are excluded from use. Exceptions are nickel in steel, chemically nickel-plated surfaces, printed circuit boards, cables, electrical plug connectors and coils
Cleanroom class	Class 9 according to ISO 14644-1
Noise level	40 dB(A)
Degree of protection	IP40
Ambient temperature	0 °C ... 50 °C
Fixed bearing dynamic basic load rating	3795 N
Linear guide dynamic basic load rating	2135 N
Dynamic basic load rating, ball screw drive	2000 N
Max. force F _y	991 N
Max. force F _z	991 N
Max. torque M _x	3.4 Nm

Feature	Value
Max. torque My	3.2 Nm
Max. torque Mz	3.2 Nm
Max. radial force on actuator shaft	75 N
Max. feed force Fx	60 N
Guide value for payload, horizontal	6 kg
Guide value for payload, vertical	6 kg
Ball screw drive statistical basic load rating	3700 N
Linear guide statistical basic load rating	3880 N
Mass moment of inertia JH per meter of stroke	0.04477 kgcm ²
Mass moment of inertia JL per kg of payload	0.01621 kgcm ²
Mass moment of inertia JO	0.00668 kgcm ²
Feed constant	8 mm/U
Statistical fixed bearing load rating	1792 N
Reference service life	5000 km
Maintenance interval	Life-time lubrication
Moving mass at 0 mm stroke	149 g
Additional moving mass per 10 mm stroke	12 g
Product weight	406 g
Basic weight with 0 mm stroke	331 g
Additional weight per 10 mm stroke	30 g
Type of mounting	With internal thread With centering sleeve With accessories With cylindrical pin
Interface code, actuator	V25
Note on materials	RoHS-compliant
Slide carriage material	Roller bearing steel
Guide rail material	Roller bearing steel
Housing material	Wrought aluminum alloy, anodized
Material of yoke plate	Wrought aluminum alloy
Piston rod material	High-alloy stainless steel
Slide material	Wrought aluminum alloy, anodized
Spindle nut material	Roller bearing steel
Spindle material	Roller bearing steel