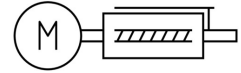
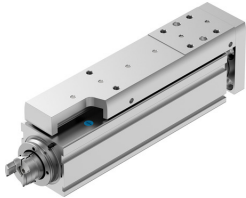


Mini slide EGSC-BS-KF-32-75-3P

Part number: 8162075

FESTO



 [General operating condition](#)

Data sheet

| Feature | Value |
|--|---|
| Working stroke | 75 mm |
| Size | 32 |
| Stroke reserve | 0 mm |
| Reversing backlash | 150 µm |
| Screw diameter | 8 mm |
| Spindle pitch | 3 mm/U |
| Mounting position | Any |
| Guide | Recirculating ball bearing guide |
| Structural design | Electrical mini-slide with ball screw drive |
| Motor type | Stepper motor Servo motor |
| Homing | Fixed stop block positive Fixed stop block, negative Reference switch |
| Spindle type | Ball screw drive |
| Symbol | 00992069 |
| Position sensing | For proximity sensor |
| Max. acceleration | 5 m/s ² |
| Max. speed | 0.188 m/s |
| Repetition accuracy | ±0.015 mm |
| Duty cycle | 100% |
| Corrosion resistance class (CRC) | 0 - No corrosion stress |
| LABS (PWIS) conformity | VDMA24364 zone III |
| Suitability for the production of Li-ion batteries | Metals with more than 1% by mass of copper, zinc or nickel by mass are excluded from use. Exceptions are nickel in steel, chemically nickel-plated surfaces, printed circuit boards, cables, electrical plug connectors and coils |
| Cleanroom class | Class 9 according to ISO 14644-1 |
| Noise level | 55 dB(A) |
| Degree of protection | IP40 |
| Ambient temperature | 0 °C ... 50 °C |
| Fixed bearing dynamic basic load rating | 3795 N |
| Linear guide dynamic basic load rating | 2135 N |
| Dynamic basic load rating, ball screw drive | 1900 N |
| Max. force F _y | 991 N |
| Max. force F _z | 991 N |
| Max. torque M _x | 3.4 Nm |

| Feature | Value |
|--|---|
| Max. torque My | 3.2 Nm |
| Max. torque Mz | 3.2 Nm |
| Max. radial force on actuator shaft | 75 N |
| Max. feed force Fx | 60 N |
| Guide value for payload, horizontal | 6 kg |
| Guide value for payload, vertical | 6 kg |
| Ball screw drive statistical basic load rating | 3300 N |
| Linear guide statistical basic load rating | 3880 N |
| Mass moment of inertia JH per meter of stroke | 0.02488 kgcm ² |
| Mass moment of inertia JL per kg of payload | 0.00228 kgcm ² |
| Mass moment of inertia JO | 0.00394 kgcm ² |
| Feed constant | 3 mm/U |
| Statistical fixed bearing load rating | 1792 N |
| Reference service life | 5000 km |
| Maintenance interval | Life-time lubrication |
| Moving mass at 0 mm stroke | 149 g |
| Additional moving mass per 10 mm stroke | 12 g |
| Product weight | 557 g |
| Basic weight with 0 mm stroke | 331 g |
| Additional weight per 10 mm stroke | 30 g |
| Type of mounting | With internal thread With centering sleeve With accessories With cylindrical pin |
| Interface code, actuator | V25 |
| Note on materials | RoHS-compliant |
| Slide carriage material | Roller bearing steel |
| Guide rail material | Roller bearing steel |
| Housing material | Wrought aluminum alloy, anodized |
| Material of yoke plate | Wrought aluminum alloy |
| Piston rod material | High-alloy stainless steel |
| Slide material | Wrought aluminum alloy, anodized |
| Spindle nut material | Roller bearing steel |
| Spindle material | Roller bearing steel |