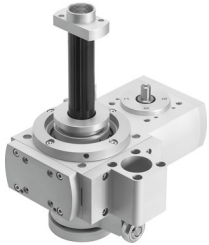



Rotary/lifting module EHMB-32-100

Part number: 1098558

FESTO



Data sheet

 [General operating condition](#)

Feature	Value
Drive pinion diameter	12 mm
Working stroke	0 mm ... 100 mm
Size	32
Rotation angle	Infinite
Toothed belt pitch	5 mm
Mounting position	Any
Gearbox type	Belt drive
Structural design	Electromechanical rotary lifting module with toothed belt
Gear ratio	3:1
Max. output speed	300 rpm
Max. input speed	900 rpm
LABS (PWIS) conformity	VDMA24364 zone III
Ambient temperature	-10 °C ... 60 °C
Max. driving torque	6.7 Nm
Max. feed force Fx	750 N
No-load driving torque	<0.5 Nm
Product weight	6112 g
Material of drive shaft	Steel
Note on materials	RoHS-compliant
Drive shaft material	High-alloy stainless steel
Cover material	Wrought aluminum alloy Anodized
Housing material	Wrought aluminum alloy Anodized
Toothed belt material	Polychloroprene with glass fiber