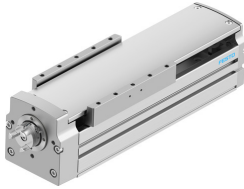


Ball screw linear actuator ELGT-BS-90-100-20P

Part number: 8124419

FESTO



 [General operating condition](#)

Data sheet

Feature	Value
Working stroke	100 mm
Size	90
Stroke reserve	0 mm
Reversing backlash	≤150 μm
Screw diameter	15 mm
Spindle pitch	20 mm/U
Mounting position	Any
Guide	Recirculating ball bearing guide
Structural design	Electromechanical linear axis with ball screw
Motor type	Stepper motor Servo motor
Spindle type	Ball screw
Symbol	00991211
Variants	Metals with copper, zinc or nickel by mass as main constituent are excluded from use. Exceptions are nickel in steel, chemically nickel-plated surfaces, printed circuit boards, cables, electrical plug connectors and coils.
Max. acceleration	15 m/s ²
Max. rotational speed	3000 rpm
Max. speed	1 m/s
Repetition accuracy	±0.02 mm
Duty cycle	100%
LABS (PWIS) conformity	VDMA24364 zone III
Suitability for the production of Li-ion batteries	Metals with more than 1% by mass of copper, zinc or nickel by mass are excluded from use. Exceptions are nickel in steel, chemically nickel-plated surfaces, printed circuit boards, cables, electrical plug connectors and coils
Cleanroom class	Class 6 according to ISO 14644-1
Degree of protection	IP20
Ambient temperature	0 °C ... 50 °C
Continuous feed force	810 N
2nd moment of area Iy	631000 mm ⁴
2nd moment of area Iz	1948000 mm ⁴
No-load torque at maximum travel speed	0.2 Nm
No-load torque at minimum travel speed	0.04 Nm
Max. force Fy	4710 N

Feature	Value
Max. force Fz	5600 N
Fy with theoretical service life of 100 km (from a guide perspective only)	17352 N
Fz with theoretical service life of 100 km (from a guide perspective only)	20631 N
Max. torque Mx	65 Nm
Max. torque My	51 Nm
Max. torque Mz	51 Nm
Mx with theoretical service life of 100 km (from a guide perspective only)	239 Nm
My with theoretical service life of 100 km (from a guide perspective only)	188 Nm
Mz with theoretical service life of 100 km (from a guide perspective only)	188 Nm
Max. radial force on actuator shaft	290 N
Max. feed force Fx	810 N
Torsion moment of inertia It	151000 mm ⁴
Mass moment of inertia JH per meter of stroke	0.2522 kgcm ²
Mass moment of inertia JL per kg of payload	0.1013 kgcm ²
Mass moment of inertia JO	0.2291 kgcm ²
Feed constant	20 mm/U
Moving mass	1645 g
Product weight	5377 g
Basic weight with 0 mm stroke	4353 g
Additional weight per 10 mm stroke	104 g
Dynamic deflection (load moved)	0.05% of axis length, maximum 0.5 mm
Static deflection (load at standstill)	0.1 % of axis length
Interface code, actuator	T46
Material of end caps	Die cast aluminum, painted
Profile material	Wrought aluminum alloy, anodized
Note on materials	RoHS-compliant
Drive cover material	Die cast aluminum, painted
Slide carriage material	Steel
Guide rail material	Steel
Slide material	Wrought aluminum alloy, anodized
Spindle nut material	Steel
Spindle material	Steel