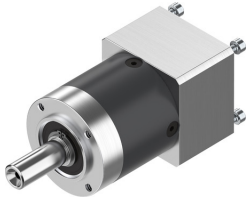



Gearbox EMGA-40-P-G5-EAS-40

Part number: 2297685

FESTO



 [General operating condition](#)

Data sheet

| Feature | Value |
|---------------------------------|-------------------------|
| Gearbox flange size | 40 mm |
| Motor flange size | 40 mm |
| Torsional backlash | 0.25 deg |
| Gearbox type | Planetary gear |
| Gear ratio | 5:1 |
| Max. actuator speed | 18000 rpm |
| Gearbox operating temperature | -25 °C ... 90 °C |
| LABS (PWIS) conformity | VDMA24364-B2-L |
| Degree of protection | IP54 |
| Continuous output torque | 14 Nm |
| Mass moment of inertia, gearbox | 0.019 kgcm ² |
| Max. output torque | 22 Nm |
| Max. efficiency | 98 % |
| Torsional rigidity | 1 Nm/arcmin |
| Product weight | 350 g |
| Gearbox interface, output shaft | 40G |
| Gearbox interface, actuator | 40P |
| Note on materials | RoHS-compliant |