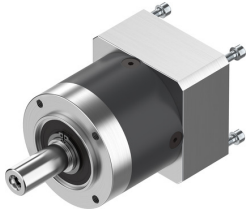


# Gearbox EMGA-60-P-G3-EAS-60

Part number: 2297686

FESTO



 [General operating condition](#)

## Data sheet

Feature	Value
Gearbox flange size	60 mm
Motor flange size	60 mm
Torsional backlash	0.17 deg
Gearbox type	Planetary gear
Gear ratio	3:1
Max. actuator speed	13000 rpm
Gearbox operating temperature	-25 °C ... 90 °C
LABS (PWIS) conformity	VDMA24364-B2-L
Degree of protection	IP54
Continuous output torque	28 Nm
Mass moment of inertia, gearbox	0.135 kgcm <sup>2</sup>
Max. output torque	45 Nm
Max. efficiency	98 %
Torsional rigidity	2.3 Nm/arcmin
Product weight	900 g
Gearbox interface, output shaft	60H
Gearbox interface, actuator	60P
Note on materials	RoHS-compliant