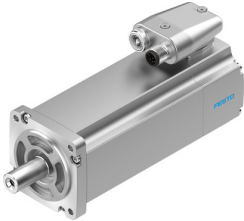


Servo motor EMME-AS-60-S-LS-AMXB

Part number: 4267573

FESTO



 General operating condition

Data sheet

| Feature | Value |
|--|--|
| Ambient temperature | -10 °C ... 40 °C |
| Storage temperature | -20 °C ... 70 °C |
| Relative air humidity | 0 - 90 % |
| Conforms to standard | IEC 60034 |
| Insulation protection class | F |
| Rating class according to EN 60034-1 | S1 |
| Degree of protection | IP21 |
| Electrical connection technology | Plug |
| Note on materials | RoHS-compliant |
| Corrosion resistance class (CRC) | 0 - No corrosion stress |
| LABS (PWIS) conformity | VDMA24364 zone III |
| Certification | RCM compliance mark c UL us - Recognized (OL) |
| CE marking (see declaration of conformity) | As per EU EMC directive As per EU low voltage directive As per EU RoHS directive |
| UKCA marking (see declaration of conformity) | To UK instructions for EMC To UK RoHS instructions To UK instructions for electrical equipment |
| Nominal operating voltage DC | 360 V |
| DC nominal voltage | 360 V |
| Type of winding switch | Star inside |
| Number of pole pairs | 3 |
| Stall torque | 0.7 Nm |
| Nominal torque | 0.6 Nm |
| Peak torque | 2.8 Nm |
| Nominal rotary speed | 3000 rpm |
| Max. rotational speed | 5131 rpm |
| Motor nominal power | 190 W |
| Continuous stall current | 0.9 A |
| Motor nominal current | 0.8 A |
| Peak current | 3.6 A |
| Motor constants | 0.75 Nm/A |
| Voltage constant, phase-to-phase | 49.6 mVmin |
| Phase-phase winding resistance | 26.4 Ohm |
| Winding inductance phase-phase | 31.9 mH |
| Total output inertia moment | 0.319 kgcm ² |

| Feature | Value |
|--|--|
| Product weight | 1650 g |
| Permissible axial shaft load | 50 N |
| Permissible radial shaft load | 250 N |
| Rotor position sensor | Safety encoder, absolute multi-turn |
| Rotor position sensor interface | HIPERFACE® |
| Rotor position sensor measuring principle | Optical |
| Rotor position encoder, sinusoidal/cosinusoidal periods per revolution | 128 |
| Typical rotor position sensor resolution | 15 bit |
| Rotor position encoder, typical angular accuracy | 20 arcmin |
| Brake holding torque | 2 Nm |
| Brake DC operating voltage | 24 V |
| Brake power consumption | 11 W |
| Brake mass moment of inertia | 0.086 kgcm ² |
| Switching cycles, holding brake | 5 million idle actuations (without friction work!) |
| Safety Integrity Level (SIL), subcomponent | SIL 2, rotor position sensor SILCL 2, rotor position sensor |
| Performance Level (PL), subcomponent | Category 3, performance level d, rotor position encoder |
| PFHd, subcomponent | 1.3 x 10E-8, rotor position sensor |
| Duration of use Tm, subcomponent | 20 years, rotor position sensor |
| MTTF, subcomponent | 538 years, holding brake |
| MTTFd, subcomponent | 874 years, rotor position sensor |