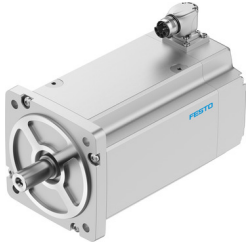


# Servo motor EMMT-AS-150-MKR-HS-R2S

Part number: 8148306

FESTO



 General operating condition

## Data sheet

| Feature   | Value  |
|---|--|
| Ambient temperature   | -15 °C ... 40 °C   |
| Note on ambient temperature   | Up to 80 °C with derating of -1.5% per degree Celsius  |
| Max. installation height  | 4000 m   |
| Information on max. installation height                             | with 1,000 m and longer only with derating of -1.0% per 100 m  |
| Storage temperature   | -20 °C ... 70 °C   |
| Relative air humidity   | 0 - 90 %   |
| Conforms to standard  | IEC 60034  |
| Thermal class according to EN 60034-1                               | F  |
| Max. winding temperature  | 155 °C   |
| Rating class according to EN 60034-1                                | S1   |
| Temperature monitoring  | Digital motor temperature transmission via EnDat® 2.2  |
| Motor type as per EN 60034-7  | IM B5<br>IM V1<br>IM V3  |
| Mounting position   | Any  |
| Degree of protection  | IP21   |
| Note on degree of protection  | IP21 for motor shaft without rotary shaft seal<br>IP65 for motor shaft with rotary shaft seal<br>IP67 for motor housing, incl. connection technology |
| Concentricity, coaxiality, axial runout according to DIN SPEC 42955 | N  |
| Balancing quality   | G 2.5  |
| Detent torque   | < 1.0% of peak torque  |
| Bearing lifetime, under nominal conditions                          | 20000 h  |
| Featherkey shaft design   | DIN 6885<br>A 8 x 7 x 36   |
| Interface code, motor out   | 150A   |
| Electrical connection 1, connection type                            | Hybrid plug  |
| Electrical connection 1, connection technology                      | M23x1  |
| Electrical connection 1, number of pins/wires                       | 15   |
| Electrical connection for input 1, connection pattern               | 00995913   |
| Contamination level   | 2  |
| Note on materials   | RoHS-compliant   |
| Corrosion resistance class (CRC)                                    | 0 - No corrosion stress  |
| LABS (PWIS) conformity  | VDMA24364 zone III   |
| Vibration resistance  | as per EN 60068-2-6  |
| Shock resistance  | as per EN 60068-2-29<br>15 g/11 ms as per EN 60068-2-27  |

| Feature  | Value  |
|--|--|
| Certification  | RCM compliance mark<br>c UL us - Recognized (OL)   |
| CE marking (see declaration of conformity)                   | As per EU EMC directive<br>As per EU low voltage directive<br>As per EU RoHS directive               |
| UKCA marking (see declaration of conformity)                 | To UK instructions for EMC<br>To UK RoHS instructions<br>To UK instructions for electrical equipment |
| Certificate issuing authority                                | UL E342973   |
| Nominal operating voltage DC                                 | 680 V  |
| Type of winding switch                                       | Star inside  |
| Number of pole pairs   | 5  |
| Stall torque   | 33 Nm  |
| Nominal torque   | 27.1 Nm  |
| Peak torque  | 64 Nm  |
| Nominal rotary speed   | 1500 rpm   |
| Max. rotational speed  | 2368 rpm   |
| Max. mechanical speed  | 10000 rpm  |
| Angular acceleration   | $\leq 100000 \text{ rad/s}^2$  |
| Motor nominal power  | 4257 W   |
| Continuous stall current                                     | 11.4 A   |
| Motor nominal current  | 9.5 A  |
| Peak current   | 24 A   |
| Motor constants  | 2.85 Nm/A  |
| Standstill torque constant                                   | 3.3 Nm/A   |
| Voltage constant, phase-to-phase                             | 199.4 mVmin  |
| Phase-phase winding resistance                               | 0.935 Ohm  |
| Winding inductance phase-phase                               | 14.6 mH  |
| Winding longitudinal inductivity Ld (phase)                  | 7.2 mH   |
| Cross inductivity Lq (phase)                                 | 7.3 mH   |
| Electric time constant                                       | 15.4 ms  |
| Thermal time constant  | 45 min   |
| Thermal resistance   | 0.45 K/W   |
| Measuring flange   | 450 x 450 x 30 mm, steel   |
| Total output inertia moment                                  | 38.7 kgcm <sup>2</sup>   |
| Product weight   | 18700 g  |
| Permissible axial shaft load                                 | 294 N  |
| Permissible radial shaft load                                | 1470 N   |
| Rotor position sensor  | Absolute encoder, single-turn  |
| Rotor position sensor for manufacturer designation           | ECl 1319   |
| Rotor position encoder for absolutely detectable revolutions | 1  |
| Rotor position sensor interface                              | EnDat@ 22  |
| Rotor position sensor measuring principle                    | Inductive  |
| Rotor position encoder for DC operating voltage              | 5 V  |
| Rotor position encoder for DC operating voltage range        | 3.6 V ... 14 V   |
| Rotor position encoder for positional values per revolution  | 524288   |
| Rotor position sensor resolution                             | 19 bit   |
| Rotor position encoder system accuracy angle measurement     | -65 arcsec ... 65 arcsec   |
| MTTF, subcomponent   | 190 years, rotor position sensor   |
| Energy efficiency  | ENEFF (CN) / Class 1   |