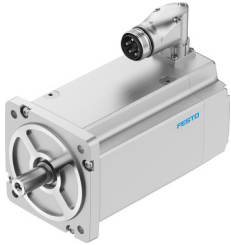


Servo motor EMMT-AS-150-MKR-HV-R3SB

Part number: 8148315

FESTO



 General operating condition

Data sheet

Feature	Value
Ambient temperature	-15 °C ... 40 °C
Note on ambient temperature	Up to 80 °C with derating of -1.5% per degree Celsius
Max. installation height	4000 m
Information on max. installation height	with 1,000 m and longer only with derating of -1.0% per 100 m
Storage temperature	-20 °C ... 70 °C
Relative air humidity	0 - 90 %
Conforms to standard	IEC 60034
Thermal class according to EN 60034-1	F
Max. winding temperature	155 °C
Rating class according to EN 60034-1	S1
Temperature monitoring	Digital motor temperature transmission via EnDat® 2.2
Motor type as per EN 60034-7	IM B5 IM V1 IM V3
Mounting position	Any
Degree of protection	IP21
Note on degree of protection	IP21 for motor shaft without rotary shaft seal IP65 for motor shaft with rotary shaft seal IP67 for motor housing, incl. connection technology
Concentricity, coaxiality, axial runout according to DIN SPEC 42955	N
Balancing quality	G 2.5
Detent torque	< 1.0% of peak torque
Bearing lifetime, under nominal conditions	20000 h
Featherkey shaft design	DIN 6885 A 8 x 7 x 36
Interface code, motor out	150A
Electrical connection 1, connection type	Hybrid plug
Electrical connection 1, connection technology	M40x1
Electrical connection 1, number of pins/wires	15
Electrical connection for input 1, connection pattern	00997380
Contamination level	2
Note on materials	RoHS-compliant
Corrosion resistance class (CRC)	0 - No corrosion stress
LABS (PWIS) conformity	VDMA24364 zone III
Vibration resistance	as per EN 60068-2-6
Shock resistance	as per EN 60068-2-29 15 g/11 ms as per EN 60068-2-27

Feature	Value
Certification	RCM compliance mark c UL us - Recognized (OL)
CE marking (see declaration of conformity)	As per EU EMC directive As per EU low voltage directive As per EU RoHS directive
UKCA marking (see declaration of conformity)	To UK instructions for EMC To UK RoHS instructions To UK instructions for electrical equipment
Certificate issuing authority	UL E342973
Nominal operating voltage DC	680 V
Type of winding switch	Star inside
Number of pole pairs	5
Stall torque	33 Nm
Nominal torque	13.5 Nm
Peak torque	60 Nm
Nominal rotary speed	3500 rpm
Max. rotational speed	5051 rpm
Max. mechanical speed	10000 rpm
Angular acceleration	$\leq 100000 \text{ rad/s}^2$
Motor nominal power	4948 W
Continuous stall current	24 A
Motor nominal current	10.2 A
Peak current	50 A
Motor constants	1.32 Nm/A
Standstill torque constant	1.54 Nm/A
Voltage constant, phase-to-phase	92.9 mVmin
Phase-phase winding resistance	0.211 Ohm
Winding inductance phase-phase	3.3 mH
Winding longitudinal inductivity Ld (phase)	1.65 mH
Cross inductivity Lq (phase)	1.65 mH
Electric time constant	15.6 ms
Thermal time constant	45 min
Thermal resistance	0.46 K/W
Measuring flange	450 x 450 x 30 mm, steel
Total output inertia moment	46.9 kgcm ²
Product weight	22200 g
Permissible axial shaft load	217 N
Permissible radial shaft load	1085 N
Rotor position sensor	Absolute encoder, single-turn
Rotor position sensor for manufacturer designation	ECl 1319
Rotor position encoder for absolutely detectable revolutions	1
Rotor position sensor interface	EnDat@ 22
Rotor position sensor measuring principle	Inductive
Rotor position encoder for DC operating voltage	5 V
Rotor position encoder for DC operating voltage range	3.6 V ... 14 V
Rotor position encoder for positional values per revolution	524288
Rotor position sensor resolution	19 bit
Rotor position encoder system accuracy angle measurement	-65 arcsec ... 65 arcsec
Brake holding torque	45 Nm
Brake DC operating voltage	24 V
Brake current consumption	1.08 A
Brake power consumption	26 W
Brake separation time	230 ms
Brake closing time	45 ms

Feature	Value
DC brake response delay	6 ms
Max. brake no-load speed	10000 rpm
Max. brake friction work	28000 J
Total brake friction work	2600 kJ
Brake mass moment of inertia	8.2 kgcm ²
Switching cycles, holding brake	5 million idle actuations (without friction work!)
MTTF, subcomponent	190 years, rotor position sensor