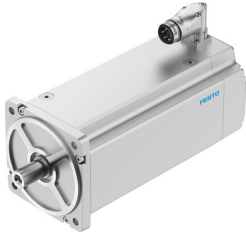


Servo motor EMMT-AS-190-LK-HT-R3MY

Part number: 8148398

FESTO



 General operating condition

Data sheet

| Feature | Value |
|---|--|
| Ambient temperature | -15 °C ... 40 °C |
| Note on ambient temperature | Up to 80 °C with derating of -1.5% per degree Celsius |
| Max. installation height | 4000 m |
| Information on max. installation height | with 1,000 m and longer only with derating of -1.0% per 100 m |
| Storage temperature | -20 °C ... 70 °C |
| Relative air humidity | 0 - 90 % |
| Conforms to standard | IEC 60034 |
| Thermal class according to EN 60034-1 | F |
| Max. winding temperature | 155 °C |
| Rating class according to EN 60034-1 | S1 |
| Temperature monitoring | Digital motor temperature transmission via EnDat® 2.2 |
| Motor type as per EN 60034-7 | IM B5 IM V1 IM V3 |
| Mounting position | Any |
| Degree of protection | IP21 |
| Note on degree of protection | IP21 for motor shaft without rotary shaft seal IP65 for motor shaft with rotary shaft seal IP67 for motor housing, incl. connection technology |
| Concentricity, coaxiality, axial runout according to DIN SPEC 42955 | N |
| Balancing quality | G 2.5 |
| Detent torque | < 1.0% of peak torque |
| Bearing lifetime, under nominal conditions | 20000 h |
| Featherkey shaft design | DIN 6885 A 10 x 8 x 45 |
| Interface code, motor out | 190B |
| Electrical connection 1, connection type | Hybrid plug |
| Electrical connection 1, connection technology | M40x1 |
| Electrical connection 1, number of pins/wires | 15 |
| Electrical connection for input 1, connection pattern | 00997380 |
| Contamination level | 2 |
| Note on materials | RoHS-compliant |
| Corrosion resistance class (CRC) | 0 - No corrosion stress |
| LABS (PWIS) conformity | VDMA24364 zone III |
| Vibration resistance | as per EN 60068-2-6 |
| Shock resistance | as per EN 60068-2-29 15 g/11 ms as per EN 60068-2-27 |

| Feature | Value |
|--|--|
| Certification | c UL us - Recognized (OL) |
| CE marking (see declaration of conformity) | As per EU EMC directive As per EU low voltage directive As per EU RoHS directive |
| UKCA marking (see declaration of conformity) | To UK instructions for EMC To UK RoHS instructions To UK instructions for electrical equipment |
| Certificate issuing authority | TÜV 968/FSP 2317.00/21 UL E342973 |
| Nominal operating voltage DC | 680 V |
| Type of winding switch | Star inside |
| Number of pole pairs | 5 |
| Stall torque | 93.7 Nm |
| Nominal torque | 82.4 Nm |
| Peak torque | 183.3 Nm |
| Nominal rotary speed | 1000 rpm |
| Max. rotational speed | 1654 rpm |
| Max. mechanical speed | 8000 rpm |
| Angular acceleration | $\leq 100000 \text{ rad/s}^2$ |
| Motor nominal power | 8629 W |
| Continuous stall current | 22.8 A |
| Motor nominal current | 20 A |
| Peak current | 49.7 A |
| Motor constants | 4.12 Nm/A |
| Standstill torque constant | 4.79 Nm/A |
| Voltage constant, phase-to-phase | 289.7 mVmin |
| Phase-phase winding resistance | 0.358 Ohm |
| Winding inductance phase-phase | 13.8 mH |
| Winding longitudinal inductivity Ld (phase) | 6.95 mH |
| Cross inductivity Lq (phase) | 6.9 mH |
| Electric time constant | 38.8 ms |
| Thermal time constant | 80 min |
| Thermal resistance | 0.3 K/W |
| Measuring flange | 450 x 450 x 30 mm, steel |
| Total output inertia moment | 145 kgcm ² |
| Product weight | 53000 g |
| Permissible axial shaft load | 520 N |
| Permissible radial shaft load | 2620 N |
| Rotor position sensor | Safety encoder, absolute multi-turn |
| Rotor position sensor for manufacturer designation | EQI 1331 |
| Rotor position encoder for absolutely detectable revolutions | 4096 |
| Rotor position sensor interface | EnDat@ 22 |
| Rotor position sensor measuring principle | Inductive |
| Rotor position encoder for DC operating voltage | 5 V |
| Rotor position encoder for DC operating voltage range | 3.6 V ... 14 V |
| Rotor position encoder for positional values per revolution | 524288 |
| Rotor position sensor resolution | 19 bit |
| Rotor position encoder system accuracy angle measurement | -65 arcsec ... 65 arcsec |
| Safety Integrity Level (SIL), subcomponent | SIL 2, encoder |
| Performance Level (PL), subcomponent | Category 3, performance level d, encoder |
| PFHd, subcomponent | 15 x 10E-9, encoder |
| Duration of use Tm, subcomponent | 20 years, rotor position sensor |
| MTTF, subcomponent | 190 years, rotor position sensor |
| Energy efficiency | ENEFF (CN) / Class 1 |