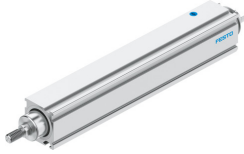


Electric actuator EPCC-BS-25-150-6P-A

Part number: 5428818

FESTO



 General operating condition

Data sheet

Feature	Value
Size	25
Stroke	150 mm
Stroke reserve	0 mm
Piston rod thread	M6
Reversing backlash	100 µm
Screw diameter	6 mm
Spindle pitch	6 mm/U
Max. angle of rotation of the piston rod +/-	1 deg
Mounting position	Any
Piston rod end	External thread
Motor type	Stepper motor Servo motor
Position sensing	For proximity sensor
Structural design	Electric actuator with ball screw drive
Spindle type	Ball screw drive
Symbol	00991941
Protection against torsion/guide	With plain-bearing guide
Max. acceleration	15 m/s ²
Max. rotational speed	4000 rpm
Max. speed	0.323 m/s
Max. homing speed	0.01 m/s
Repetition accuracy	±0.02 mm
Duty cycle	100%
Corrosion resistance class (CRC)	0 - No corrosion stress
LABS (PWIS) conformity	VDMA24364 zone III
Suitability for the production of Li-ion batteries	Metals with more than 1% by mass of copper, zinc or nickel by mass are excluded from use. Exceptions are nickel in steel, chemically nickel-plated surfaces, printed circuit boards, cables, electrical plug connectors and coils
Cleanroom class	Class 9 according to ISO 14644-1
Storage temperature	-20 °C ... 60 °C
Relative air humidity	0 - 95 % Non-condensing
Degree of protection	IP40
Ambient temperature	0 °C ... 60 °C
Impact energy in the end positions	0.0012 J

Feature	Value
Max. driving torque	0.1 Nm
Max. torque Mx	0 Nm
Max. torque My	0.6 Nm
Max. torque Mz	0.6 Nm
Max. radial force on actuator shaft	30 N
Max. feed force Fx	75 N
No-load driving torque	0.055 Nm
Guide value for payload, horizontal	12 kg
Guide value for payload, vertical	6 kg
Mass moment of inertia JH per meter of stroke	0.0095 kgcm ²
Mass moment of inertia JL per kg of payload	0.0091 kgcm ²
Mass moment of inertia JO	0.0014 kgcm ²
Maintenance interval	Life-time lubrication
Moving mass at 0 mm stroke	53 g
Additional moving mass per 10 mm stroke	2.6 g
Basic weight with 0 mm stroke	132 g
Additional weight per 10 mm stroke	13 g
Type of mounting	With accessories
Note on materials	RoHS-compliant
Housing material	Wrought aluminum alloy Smooth anodized
Piston rod material	High-alloy stainless steel
Spindle nut material	Steel
Spindle material	Roller bearing steel