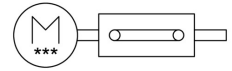
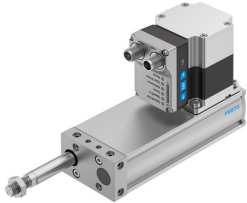


Electric cylinder unit EPCE-TB-60-80-FL-MF-ST-M-H1-PLK-AA

FESTO

Part number: 8102171



[PDF General operating condition](#)

Data sheet

Feature	Value
Drive pinion effective diameter	10.18 mm
Size	60
Stroke	80 mm
Stroke reserve	0 mm
Piston rod thread	M10x1.25
Toothed belt elongation	0.375 %
Toothed belt pitch	2 mm
Mounting position	Any
Piston rod end	External thread
Motor type	Stepper motor
Position sensing	Motor encoder
Structural design	Electric actuator with toothed belt With integrated drive
Symbol	00997342
Protection against torsion/guide	With plain-bearing guide
Homing	Fixed stop block positive Fixed stop block, negative
Rotor position sensor	Absolute encoder, single-turn
Rotor position sensor measuring principle	Magnetic
Temperature monitoring	Shutdown in the event of over temperature Integrated precise CMOS temperature sensor with analogue output
Additional functions	User interface Integrated end-position sensing
Display	LED
Ready status indication	LED
Max. acceleration	9 m/s ²
Max. speed	0.6 m/s
Speed "Speed Press"	0.02 m/s
Repetition accuracy	±0.05 mm
Characteristics of digital logic outputs	Configurable Not galvanically isolated
Duty cycle	100%
Insulation protection class	B
Max. current of digital logic outputs	100 mA
Max. current consumption	5300 mA
Logic max. current consumption	0.3 A

Feature	Value
DC nominal voltage	24 V
Nominal current	5.3 A
Parameterization interface	IO-Link® User interface
Rotor position sensor resolution	16 bit
Permissible voltage fluctuations	+/- 15 %
Power supply, type of connection	Plug
Power supply, connection technology	M12x1, T-coded as per EN 61076-2-111
Power supply, number of pins/wires	4
Power supply, connection pattern	00995989
Certification	RCM compliance mark
KC characters	KC EMC
CE marking (see declaration of conformity)	As per EU EMC directive As per EU RoHS directive
UKCA marking (see declaration of conformity)	To UK instructions for EMC To UK RoHS instructions
Vibration resistance	Transport application test with severity level 1 as per FN 942017-4 and EN 60068-2-6
Shock resistance	Shock test with severity level 1 as per FN 942017-5 and EN 60068-2-27
Corrosion resistance class (CRC)	0 - No corrosion stress
LABS (PWIS) conformity	VDMA24364 zone III
Storage temperature	-20 °C ... 60 °C
Relative air humidity	0 - 90 %
Degree of protection	IP40
Protection class	III
Ambient temperature	0 °C ... 50 °C
Note on ambient temperature	Above an ambient temperature of 30°C, the power must be reduced by 2% per K.
Impact energy in the end positions	0.016 J
Max. torque Mx	0 Nm
Max. torque My	1 Nm
Max. torque Mz	1 Nm
Max. feed force Fx	150 N
Guide value for payload, horizontal	10 kg
Guide value for payload, vertical	5 kg
Feed constant	32 mm/U
Reference service life	800 km
Maintenance interval	Life-time lubrication
Moving mass	275 g
Moving mass at 0 mm stroke	197 g
Additional moving mass per 10 mm stroke	9.75 g
Product weight	1774 g
Basic weight with 0 mm stroke	1407 g
Additional weight per 10 mm stroke	46 g
Number of digital logic outputs 24 V DC	2
Number of digital logic inputs	2
Logic input specification	Based on IEC 61131-2, type 1
Work range of logic input	24 V
Characteristics of logic input	Configurable Not galvanically isolated
IO-Link®, SIO mode support	Yes
IO-Link®, protocol version	Device V 1.1
IO-Link®, communication mode	COM3 (230.4 kBd)
IO-Link®, port class	A

Feature	Value
IO-Link®, number of ports	1
IO-Link®, process data width OUT	2 Byte
IO-Link®, process data content OUT	Move in 1 bit Move out 1 bit Quit Error 1 bit Move Intermediate 1 bit
IO-Link®, process data width IN	2 Byte
IO-Link®, process data content IN	State In 1 bit State Out 1 bit State Move 1 bit State Device 1 bit State Intermediate 1 bit
IO-Link®, service data contents IN	Speed 32 bit Position 32 bit Force 32 bit
IO-Link®, minimum cycle time	1 ms
IO-Link®, data memory required	500 byte
Max. cable length	15 m outputs 15 m inputs 20 m for IO-Link® operation
Switching logic at outputs	PNP (positive switching)
Input switching logic	PNP (positive switching)
IO-Link®, Connection technology	Plug
Logic interface, connection type	Plug
Logic interface, connection technology	M12x1, A-coded as per EN 61076-2-101
Logic interface, number of poles/wires	8
Logic interface, connection pattern	00992264
Type of mounting	With through-hole With internal thread With centering sleeve With accessories
Note on materials	RoHS-compliant
Cover material	Wrought aluminum alloy, anodized
Housing material	Wrought aluminum alloy, anodized
Piston rod material	High-alloy stainless steel
Toothed belt material	Polychloroprene with glass fiber