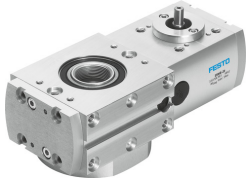


Rotary module ERMB-20

Part number: 552706

FESTO



 [General operating condition](#)

Data sheet

Feature	Value
Size	20
Structural design	Electromechanical rotary module with toothed belt
Mounting position	Any
Rotation angle	Infinite
Gear ratio	4.5:1
Product weight	850 g
Drive pinion diameter	6 mm
Toothed belt pitch	2 mm
Max. output speed	300 rpm
Max. input speed	1350 rpm
Max. driving torque	0.7 Nm
No-load driving torque	<0.07 Nm
Ambient temperature	-10 °C ... 60 °C
LABS (PWIS) conformity	VDMA24364 zone III
Note on materials	RoHS-compliant
Housing material	Wrought aluminum alloy Anodized
Material of drive shaft	Wrought aluminum alloy Anodized
Drive shaft material	High-alloy stainless steel
Cover material	Wrought aluminum alloy Anodized
Toothed belt material	Polychloroprene with glass fiber