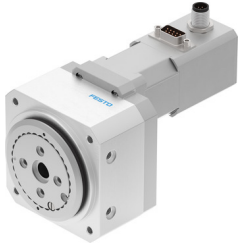



Rotary actuator ERMO-25-ST-E

Part number: 3008527

FESTO



 [General operating condition](#)

Data sheet

| Feature | Value |
|--|---|
| Size | 25 |
| Structural design | Electromechanical rotary actuator with integrated gearbox |
| Mounting position | Any |
| Type of mounting | With internal thread |
| Rotation angle | Infinite |
| Gear ratio | 9:1 |
| Nominal torque | 2.5 Nm |
| Nominal rotary speed | 66 rpm |
| Max. speed at 90° | 150 rpm |
| Impact energy in the end positions | 1.6E-4 J |
| Torsional backlash | 0.2 deg |
| Repetition accuracy | ±0.05 ° |
| Max. axial force | 350 N |
| Max. radial force | 450 N |
| Permissible mass moment of inertia | 0.0065 kgm ² |
| Product weight | 1350 g |
| Step angle with full step | 1.8 deg |
| Step angle tolerance | ±5% |
| Mass moment of inertia JO | 0.114 kgcm ² |
| Duty cycle | 100% |
| Nominal operating voltage DC | 24 V |
| Brake DC operating voltage | 24 V |
| Brake power consumption | 8 W |
| Brake holding torque | 2.5 Nm |
| Brake mass moment of inertia | 0.013 kgcm ² |
| Motor nominal current | 3 A |
| Insulation protection class | B |
| Motor type | Stepper motor |
| Rotor position sensor | Incremental encoder |
| Rotor position sensor interface | RS422 TTL A/B channels + zero index |
| Rotor position sensor measuring principle | Optical |
| Electrical connection technology | Plug |
| Certification | RCM compliance mark |
| CE marking (see declaration of conformity) | As per EU EMC directive As per EU RoHS directive |

| Feature | Value |
|--|---|
| UKCA marking (see declaration of conformity) | To UK instructions for EMC To UK RoHS instructions |
| Interface code, base | E8-55 |
| Degree of protection | IP40 |
| Storage temperature | -20 °C ... 60 °C |
| Ambient temperature | 0 °C ... 50 °C |
| Relative air humidity | 0 - 85 % Non-condensing |
| LABS (PWIS) conformity | VDMA24364 zone III |
| Note on materials | RoHS-compliant |
| Material of flange | Wrought aluminum alloy Anodized |
| Housing material | Wrought aluminum alloy Anodized |