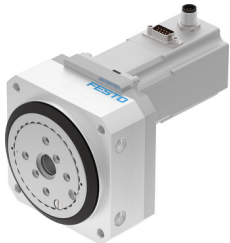


# Rotary actuator ERMO-32-ST-E

Part number: 3008528

FESTO



 [General operating condition](#)

## Data sheet

Feature	Value
Size	32
Structural design	Electromechanical rotary actuator with integrated gearbox
Mounting position	Any
Type of mounting	With internal thread
Rotation angle	Infinite
Gear ratio	7:1
Nominal torque	5 Nm
Nominal rotary speed	50 rpm
Max. speed at 90°	100 rpm
Impact energy in the end positions	2.9E-4 J
Torsional backlash	0.2 deg
Repetition accuracy	±0.1 °
Max. axial force	450 N
Max. radial force	550 N
Permissible mass moment of inertia	0.0164 kgm <sup>2</sup>
Product weight	2200 g
Step angle with full step	1.8 deg
Step angle tolerance	±5%
Mass moment of inertia JO	0.39 kgcm <sup>2</sup>
Duty cycle	100%
Nominal operating voltage DC	24 V
Brake DC operating voltage	24 V
Brake power consumption	8 W
Brake holding torque	2.5 Nm
Brake mass moment of inertia	0.013 kgcm <sup>2</sup>
Motor nominal current	4.2 A
Insulation protection class	B
Motor type	Stepper motor
Rotor position sensor	Incremental encoder
Rotor position sensor interface	RS422 TTL A/B channels + zero index
Rotor position sensor measuring principle	Optical
Electrical connection technology	Plug
Certification	RCM compliance mark
CE marking (see declaration of conformity)	As per EU EMC directive As per EU RoHS directive

<b>Feature</b>	<b>Value</b>
UKCA marking (see declaration of conformity)	To UK instructions for EMC To UK RoHS instructions
Interface code, base	E8-55
Degree of protection	IP40
Storage temperature	-20 °C ... 60 °C
Ambient temperature	0 °C ... 50 °C
Relative air humidity	0 - 85 % Non-condensing
LABS (PWIS) conformity	VDMA24364 zone III
Note on materials	RoHS-compliant
Material of flange	Wrought aluminum alloy Anodized
Housing material	Wrought aluminum alloy Anodized