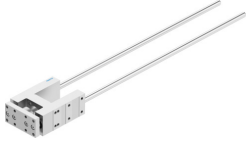


# Guide unit FENG-32-500-KF

Part number: 34498

FESTO



 General operating condition

## Data sheet

Feature	Value
Size	32
Stroke	500 mm
Mounting position	Any
Guide	Recirculating ball bearing guide
Structural design	Guide
Explosion prevention and protection	Zone 1 (ATEX) Zone 2 (ATEX) Zone 21 (ATEX) Zone 22 (ATEX)
LABS (PWIS) conformity	VDMA24364-B2-L
Ambient temperature	-20 °C ... 80 °C
Max. force Fy	750 N
Max. force Fy static	1020 N
Max. force Fz	750 N
Max. force Fz static	1020 N
Max. torque Mx	28 Nm
Max. static moment Mx	38 Nm
Max. torque My	34 Nm
Max. static moment My	46 Nm
Max. torque Mz	34 Nm
Max. static moment Mz	46 Nm
Displacement force	15 N
Product weight	2430 g
Type of mounting	With internal thread
Note on materials	RoHS-compliant
Material of guide component	Tempered steel
Housing material	Wrought aluminum alloy, anodized
Material of yoke plate	Wrought aluminum alloy, anodized