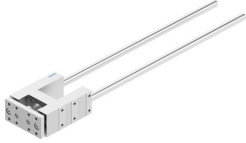


Guide unit FENG-40-500-KF

Part number: 34505

FESTO



 General operating condition

Data sheet

Feature	Value
Size	40
Stroke	500 mm
Mounting position	Any
Guide	Recirculating ball bearing guide
Structural design	Guide
Explosion prevention and protection	Zone 1 (ATEX) Zone 2 (ATEX) Zone 21 (ATEX) Zone 22 (ATEX)
LABS (PWIS) conformity	VDMA24364-B2-L
Ambient temperature	-20 °C ... 80 °C
Max. force Fy	1000 N
Max. force Fy static	1260 N
Max. force Fz	1000 N
Max. force Fz static	1260 N
Max. torque Mx	44 Nm
Max. static moment Mx	55 Nm
Max. torque My	52 Nm
Max. static moment My	65 Nm
Max. torque Mz	52 Nm
Max. static moment Mz	65 Nm
Displacement force	15 N
Product weight	3970 g
Type of mounting	With internal thread
Note on materials	RoHS-compliant
Material of guide component	Tempered steel
Housing material	Wrought aluminum alloy, anodized
Material of yoke plate	Wrought aluminum alloy, anodized