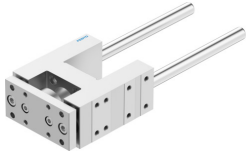


Guide unit FENG-50-160-KF

Part number: 34508

FESTO



 General operating condition

Data sheet

Feature	Value
Size	50
Stroke	160 mm
Mounting position	Any
Guide	Recirculating ball bearing guide
Structural design	Guide
Explosion prevention and protection	Zone 1 (ATEX) Zone 2 (ATEX) Zone 21 (ATEX) Zone 22 (ATEX)
LABS (PWIS) conformity	VDMA24364-B2-L
Ambient temperature	-20 °C ... 80 °C
Max. force Fy	1260 N
Max. force Fy static	1600 N
Max. force Fz	1260 N
Max. force Fz static	1600 N
Max. torque Mx	65 Nm
Max. static moment Mx	83 Nm
Max. torque My	70 Nm
Max. static moment My	89 Nm
Max. torque Mz	70 Nm
Max. static moment Mz	89 Nm
Displacement force	15 N
Product weight	4814 g
Type of mounting	With internal thread
Note on materials	RoHS-compliant
Material of guide component	Tempered steel
Housing material	Wrought aluminum alloy, anodized
Material of yoke plate	Wrought aluminum alloy, anodized