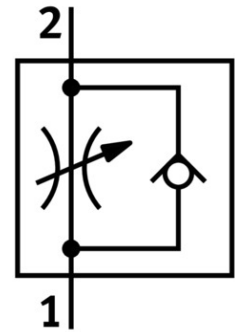


# One-way flow control valve GR-1/4

Part number: 2101

FESTO



[PDF](#) General operating condition

## Data sheet

Feature	Value
Valve function	Flow control non-return function
Pneumatic connection 1	G1/4
Pneumatic connection 2	G1/4
Adjusting element	Knurled screw
Type of mounting	Line installation
Standard nominal flow rate in flow control direction	370 l/min
Standard nominal flow rate in non-return direction	150 l/min
Operating pressure	0.5 bar ... 10 bar
Ambient temperature	-20 °C ... 75 °C
Housing material	Wrought aluminum alloy
Explosion prevention and protection	Observe the information on the certificate Zone 1 (ATEX) Zone 2 (ATEX) Zone 21 (ATEX) Zone 22 (ATEX)
Mounting position	Any
Symbol	00991453
Standard flow rate in flow control direction 6 -> 0 bar	570 l/min
Standard flow rate in non-return direction at 6 -> 0 bar	340 l/min
Operating medium	Compressed air as per ISO 8573-1:2010 [7:-:-]
Information on operating and pilot media	Operation with oil lubrication possible (required for further use)
LABS (PWIS) conformity	VDMA24364-B1/B2-L
Temperature of medium	-20 °C ... 75 °C
Product weight	80 g
Note on materials	RoHS-compliant
Seals material	NBR
Material of adjusting screw	Steel Galvanized