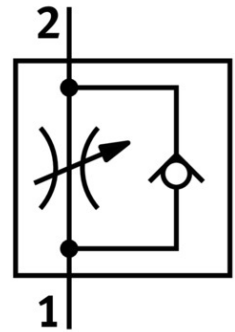


One-way flow control valve GR-M5-B

Part number: 151213

FESTO



[PDF](#) General operating condition

Data sheet

Feature	Value
Valve function	Flow control non-return function
Pneumatic connection 1	M5
Pneumatic connection 2	M5
Adjusting element	Knurled screw
Type of mounting	Optionally: Front panel mounting With through-hole
Standard nominal flow rate in flow control direction	115 l/min
Standard nominal flow rate in non-return direction	130 l/min ... 137 l/min
Operating pressure	0.5 bar ... 10 bar
Ambient temperature	-20 °C ... 60 °C
Housing material	Wrought aluminum alloy
Explosion prevention and protection	Observe the information on the certificate Zone 1 (ATEX) Zone 2 (ATEX) Zone 21 (ATEX) Zone 22 (ATEX)
Mounting position	Any
Symbol	00991453
Operating medium	Compressed air as per ISO 8573-1:2010 [7:4:4]
Information on operating and pilot media	Operation with oil lubrication possible (required for further use)
LABS (PWIS) conformity	VDMA24364-B1/B2-L
Temperature of medium	-20 °C ... 60 °C
Nominal width	2 mm
Product weight	19 g
Note on materials	RoHS-compliant
Seals material	NBR
Sleeve material	POM
Material of adjusting screw	High-alloy steel
Nut material	Wrought aluminum alloy