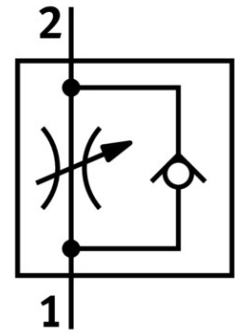


One-way flow control valve GR-QB-1/2-U

Part number: 534685

FESTO



[PDF](#) General operating condition

Data sheet

| Feature | Value |
|---|--|
| Valve function | Flow control non-return function |
| Pneumatic connection 1 | QB-1/2 |
| Pneumatic connection 2 | QB-1/2 |
| Actuation type | Manual |
| Adjusting element | Slotted screw |
| Type of mounting | Optionally: Line installation With through-hole |
| Standard nominal flow rate in flow control direction | 1779.66 l/min |
| Standard nominal flow rate in non-return direction | 1372.881 l/min ... 1614.407 l/min |
| Operating pressure | -0.951 bar ... 7.998 bar |
| Ambient temperature | 0 °C ... 60 °C |
| Housing material | PBT-reinforced |
| Mounting position | Any |
| Symbol | 00991453 |
| Standard flow rate in flow control direction 6 → 0 bar | 2949.2 l/min |
| Standard flow rate in non-return direction at 6 → 0 bar | 2110.169 l/min ... 2567.797 l/min |
| Operating medium | Compressed air as per ISO 8573-1:2010 [7:4:4] |
| Information on operating and pilot media | Operation with oil lubrication possible (required for further use) |
| LABS (PWIS) conformity | VDMA24364 zone III |
| Temperature of medium | 0 °C ... 60 °C |
| Product weight | 119.07 g |
| Material of screwed plug | Brass Nickel-plated |
| Note on materials | RoHS-compliant |
| Seals material | NBR |
| Releasing ring material | POM |
| Knurled head material | Brass Nickel-plated |
| Material of adjusting screw | Brass Nickel-plated |