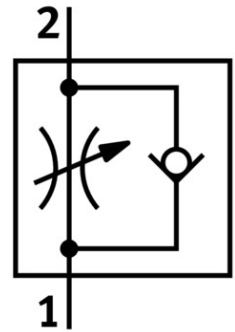



# One-way flow control valve GRLA-1/4-QS-8-D

Part number: 193147

FESTO



 [General operating condition](#)

## Data sheet

| Feature  | Value  |
|--|--|
| Valve function   | Exhaust air flow control non-return function                       |
| Pneumatic connection 1                                   | QS-8   |
| Pneumatic connection 2                                   | G $\frac{1}{4}$  |
| Adjusting element  | Slotted screw  |
| Type of mounting   | Screw-in   |
| Standard nominal flow rate in flow control direction     | 475 l/min  |
| Standard nominal flow rate in non-return direction       | 325 l/min ... 500 l/min  |
| Ambient temperature                                      | -10 °C ... 60 °C   |
| Maritime classification                                  | See certificate  |
| Mounting position  | Any  |
| Symbol   | 00991452   |
| Operating pressure for entire temperature range          | 0.2 bar ... 10 bar   |
| Standard flow rate in flow control direction 6 -> 0 bar  | 720 l/min  |
| Standard flow rate in non-return direction at 6 -> 0 bar | 610 l/min ... 760 l/min  |
| Operating medium   | Compressed air as per ISO 8573-1:2010 [7:4:4]                      |
| Information on operating and pilot media                 | Operation with oil lubrication possible (required for further use) |
| LABS (PWIS) conformity                                   | VDMA24364-B1/B2-L  |
| Cleanroom class  | Class 4 according to ISO 14644-1                                   |
| Temperature of medium                                    | -10 °C ... 60 °C   |
| Nominal tightening torque                                | 5 Nm   |
| Tolerance for nominal tightening torque                  | ± 10%  |
| Product weight   | 42 g   |
| Material of screwed plug                                 | Wrought aluminum alloy   |
| Note on materials  | RoHS-compliant   |
| Seals material   | NBR  |
| Releasing ring material                                  | POM  |
| Material of adjusting screw                              | Brass  |
| Swivel joint material                                    | Die-cast zinc<br>Chromated   |