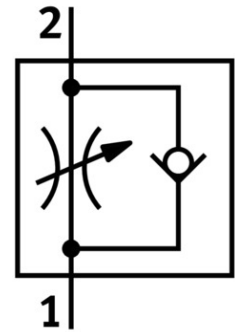


One-way flow control valve GRLA-3/8-QB-1/2-U

Part number: 534667

FESTO



[PDF](#) General operating condition

Data sheet

| Feature | Value |
|--|--|
| Valve function | Exhaust air flow control non-return function |
| Pneumatic connection 1 | QB-1/2 |
| Pneumatic connection 2 | 3/8 NPT |
| Actuation type | Manual |
| Adjusting element | Slotted screw |
| Type of mounting | Screw-in With external thread |
| Standard nominal flow rate in flow control direction | 3902.54 l/min |
| Standard nominal flow rate in non-return direction | 3000 l/min ... 3978.814 l/min |
| Ambient temperature | 0 °C ... 60 °C |
| Mounting position | Any |
| Symbol | 00991452 |
| Operating pressure for entire temperature range | -0.951 bar ... 7.998 bar |
| Standard flow rate in flow control direction 6 -> 0 bar | 6419.5 l/min |
| Standard flow rate in non-return direction at 6 -> 0 bar | 6419.492 l/min ... 6673.729 l/min |
| Operating medium | Compressed air as per ISO 8573-1:2010 [7:4:4] |
| Information on operating and pilot media | Operation with oil lubrication possible (required for further use) |
| LABS (PWIS) conformity | VDMA24364 zone III |
| Temperature of medium | 0 °C ... 60 °C |
| Max. tightening torque | 21.964 Nm |
| Product weight | 73.993 g |
| Material of screwed plug | Brass Nickel-plated |
| Note on materials | RoHS-compliant |
| Seals material | NBR |
| Hollow bolt material | Brass Nickel-plated |
| Releasing ring material | POM |
| Knurled head material | Brass Nickel-plated |

| Feature | Value |
|-----------------------------|------------------------|
| Material of adjusting screw | Brass Nickel-plated |
| Swivel joint material | PBT-reinforced |