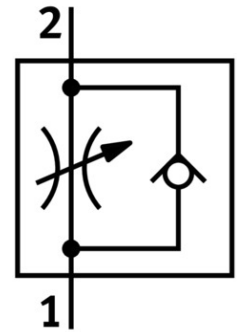


One-way flow control valve GRLZ-1/8-QS-4-D

Part number: 193157

FESTO



[PDF](#) General operating condition

Data sheet

Feature	Value
Valve function	Supply air flow control non-return function
Pneumatic connection 1	QS-4
Pneumatic connection 2	G1/8
Adjusting element	Slotted screw
Type of mounting	Screw-in
Standard nominal flow rate in flow control direction	160 l/min
Standard nominal flow rate in non-return direction	120 l/min ... 190 l/min
Ambient temperature	-10 °C ... 60 °C
Maritime classification	See certificate
Mounting position	Any
Symbol	00991453
Operating pressure for entire temperature range	0.2 bar ... 10 bar
Standard flow rate in flow control direction 6 -> 0 bar	300 l/min
Standard flow rate in non-return direction at 6 -> 0 bar	260 l/min ... 290 l/min
Operating medium	Compressed air as per ISO 8573-1:2010 [7:4:4]
Information on operating and pilot media	Operation with oil lubrication possible (required for further use)
LABS (PWIS) conformity	VDMA24364-B1/B2-L
Cleanroom class	Class 4 according to ISO 14644-1
Temperature of medium	-10 °C ... 60 °C
Nominal tightening torque	3 Nm
Tolerance for nominal tightening torque	± 10%
Product weight	22 g
Material of screwed plug	Wrought aluminum alloy
Note on materials	RoHS-compliant
Seals material	NBR
Releasing ring material	POM
Material of adjusting screw	Brass
Swivel joint material	Die-cast zinc Chromated