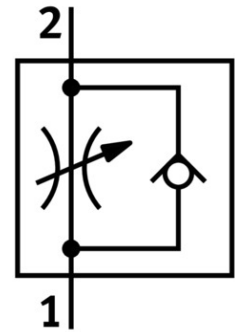


One-way flow control valve GRLZ-M3

Part number: 175040

FESTO



[PDF](#) General operating condition

Data sheet

Feature	Value
Valve function	Supply air flow control non-return function
Pneumatic connection 1	M3
Pneumatic connection 2	M3
Adjusting element	Slotted screw
Type of mounting	Screw-in
Standard nominal flow rate in flow control direction	18 l/min
Standard nominal flow rate in non-return direction	18 l/min ... 20 l/min
Operating pressure	0.2 bar ... 10 bar
Ambient temperature	-10 °C ... 60 °C
Explosion prevention and protection	Observe the information on the certificate Zone 1 (ATEX) Zone 2 (ATEX) Zone 21 (ATEX) Zone 22 (ATEX)
Mounting position	Any
Symbol	00991453
Standard flow rate in flow control direction 6 -> 0 bar	33 l/min
Standard flow rate in non-return direction at 6 -> 0 bar	33 l/min ... 37 l/min
Operating medium	Compressed air as per ISO 8573-1:2010 [7:4:4]
Information on operating and pilot media	Operation with oil lubrication possible (required for further use)
LABS (PWIS) conformity	VDMA24364-B1/B2-L
Cleanroom class	Class 4 according to ISO 14644-1
Temperature of medium	-10 °C ... 60 °C
Max. tightening torque	0.3 Nm
Product weight	2 g
Material of screwed plug	Brass Nickel-plated
Note on materials	RoHS-compliant
Seals material	NBR
Material of adjusting screw	Brass
Swivel joint material	Die-cast zinc