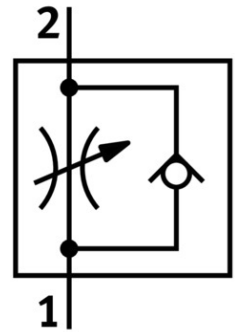


# Precision one-way flow control valve GRP-160-1/8-AL

Part number: 542023

FESTO



[PDF](#) General operating condition

## Data sheet

| Feature  | Value  |
|--|--|
| Valve function   | Flow control non-return function                           |
| Pneumatic connection 1   | G1/8   |
| Pneumatic connection 2   | G1/8   |
| Actuation type   | Manual   |
| Adjusting element  | Rotary knob with scale                                     |
| Type of mounting   | On sub-base  |
| Standard nominal flow rate in flow control direction                     | 75.8 l/min   |
| Standard nominal flow rate in non-return direction                       | 245 l/min  |
| Operating pressure   | 0 bar ... 8 bar  |
| Ambient temperature  | -10 °C ... 50 °C   |
| Housing material   | PA-reinforced  |
| Mounting position  | Any  |
| Symbol   | 00991453   |
| Operating pressure from 2 to 1   | 0 bar ... 8 bar  |
| Standard nominal flow rate in flow control direction from 1 bar to 0 bar | 38 l/min   |
| Standard nominal flow rate in non-return direction from 1 bar to 0 bar   | 25 l/min ... 90 l/min                                      |
| Standard flow rate in flow control direction 6 -> 0 bar                  | 129 l/min  |
| Standard flow rate in non-return direction at 6 -> 0 bar                 | 245 l/min  |
| Operating medium   | Compressed air as per ISO 8573-1:2010 [5:4:3]<br>Inert gas |
| Information on operating and pilot media                                 | Operation with oil lubrication not possible                |
| LABS (PWIS) conformity   | VDMA24364 zone III   |
| Temperature of medium  | -10 °C ... 50 °C   |
| Product weight   | 110 g  |
| Note on materials  | RoHS-compliant   |
| Material of sub-base   | Wrought aluminum alloy                                     |
| Seals material   | NBR<br>PVC   |
| Material of screws   | Steel  |