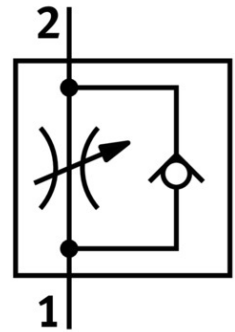


# Precision one-way flow control valve GRP-70-PK-3

Part number: 10802

FESTO



[PDF](#) General operating condition

## Data sheet

Feature	Value
Valve function	Flow control non-return function
Pneumatic connection 1	PK-3
Pneumatic connection 2	PK-3
Actuation type	Manual
Adjusting element	Rotary knob with scale
Type of mounting	Front panel mounting
Standard nominal flow rate in flow control direction	40.7 l/min
Standard nominal flow rate in non-return direction	88 l/min
Operating pressure	0 bar ... 8 bar
Ambient temperature	-10 °C ... 50 °C
Housing material	PA-reinforced
Mounting position	Any
Symbol	00991453
Operating pressure from 2 to 1	0 bar ... 8 bar
Standard nominal flow rate in flow control direction from 1 bar to 0 bar	19 l/min
Standard nominal flow rate in non-return direction from 1 bar to 0 bar	20 l/min ... 60 l/min
Standard flow rate in flow control direction 6 -> 0 bar	60 l/min
Standard flow rate in non-return direction at 6 -> 0 bar	127 l/min
Operating medium	Compressed air as per ISO 8573-1:2010 [5:4:3] Inert gas
Information on operating and pilot media	Operation with oil lubrication not possible
LABS (PWIS) conformity	VDMA24364 zone III
Temperature of medium	-10 °C ... 50 °C
Product weight	48 g
Note on materials	RoHS-compliant
Seals material	NBR PVC
Retaining bracket material	Wrought aluminum alloy
PK connections material	Wrought aluminum alloy Brass

Feature	Value
Material of screws	Steel