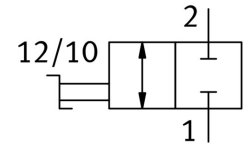
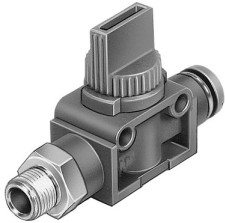


On off valve HE-2-1/2-QS-12

Part number: 153474

FESTO



[General operating condition](#)

Data sheet

Feature	Value
Valve function	2/2 bistable
Pneumatic connection 1	R1/2
Pneumatic connection 2	QS-12
Actuation type	Manual
Type of mounting	Optionally: Direct mounting via through-hole Direct fastening via thread
Standard nominal flow rate	834.3 l/min
Nominal width	7.7 mm
Operating pressure	-0.095 MPa ... 1 MPa
Operating pressure	-0.95 bar ... 10 bar
Ambient temperature	0 °C ... 60 °C
Housing material	PBT-reinforced
Operating medium	Compressed air as per ISO 8573-1:2010 [7:-:-]
Sealing principle	Soft
Mounting position	Any
Structural design	Piston gate valve
Type of control	Direct
Flow direction	Reversible
Symbol	00997328
Information on operating and pilot media	Operation with oil lubrication possible (required for further use)
Corrosion resistance class (CRC)	2 - Moderate corrosion stress
LABS (PWIS) conformity	VDMA24364-B1/B2-L
Cleanroom class	Class 4 according to ISO 14644-1
Temperature of medium	0 °C ... 60 °C
Product weight	86 g
Material of screwed plug	Brass, nickel-plated
Note on materials	RoHS-compliant
Seals material	NBR