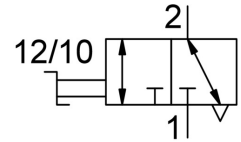


On off valve HE-3-QS-3/8-U

Part number: 153978

FESTO



[PDF General operating condition](#)

Data sheet

Feature	Value
Valve function	3/2, bistable
Selection of additional function	with exhaust function
Pneumatic connection 1	QS-3/8
Pneumatic connection 2	QS-3/8
Actuation type	Manual
Type of mounting	Optionally: Direct mounting via through-hole Line installation
Standard nominal flow rate	707.4 l/min
Nominal width	4.5 mm
Operating pressure	-0.095 MPa ... 1 MPa
Operating pressure	-0.95 bar ... 10 bar
Ambient temperature	0 °C ... 60 °C
Housing material	PBT-reinforced
Operating medium	Compressed air as per ISO 8573-1:2010 [7:-:-]
Exhaust air function	Without flow control option
Sealing principle	Soft
Mounting position	Any
Structural design	Piston gate valve
Type of control	Direct
Flow direction	Non-reversible
Symbol	00997329
Information on operating and pilot media	Operation with oil lubrication possible (required for further use)
Corrosion resistance class (CRC)	2 - Moderate corrosion stress
LABS (PWIS) conformity	VDMA24364-B1/B2-L
Cleanroom class	Class 4 according to ISO 14644-1
Temperature of medium	0 °C ... 60 °C
Product weight	42 g
Pneumatic connection 3	Not ducted
Note on materials	RoHS-compliant
Seals material	NBR