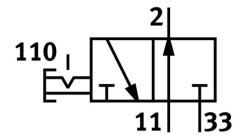


On off valve HE-N3/8-LO

Part number: 197129

FESTO



General operating condition

Data sheet

Feature	Value
Sealing principle	Soft
Exhaust air function	Without flow control option
Type of control	Direct
Symbol	00991672
Operating pressure	1 bar ... 10 bar
C value	20.95 l/sbar
b-value	0.42
Standard nominal flow rate	5200 l/min
Operating medium	Compressed air as per ISO 8573-1:2010 [7:4:4]
Corrosion resistance class (CRC)	3 - High corrosion stress
LABS (PWIS) conformity	VDMA24364-B1/B2-L
Temperature of medium	-10 °C ... 60 °C
Ambient temperature	-10 °C ... 60 °C
Type of mounting	Screw-in
Mounting position	Any
Flow direction	Non-reversible
Product weight	1100 g
Pneumatic connection 1	3/8 NPT
Pneumatic connection 2	3/8 NPT
Pneumatic connection 3	1 NPT
Seals material	NBR TPE-U(PU)
Housing material	Die-cast aluminum