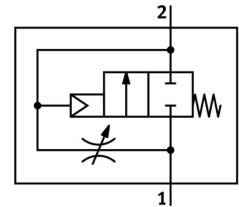


# Shut off valve HEL-1/8-D-MINI

Part number: 165076

FESTO



[PDF](#) General operating condition

## Data sheet

| Feature                                  | Value  |
|--|--|
| Exhaust air function                     | With flow control option   |
| Actuation type                           | Pneumatic  |
| Sealing principle                        | Soft   |
| Mounting position                        | Any  |
| Manual override                          | None   |
| Structural design                        | Piston gate valve  |
| Reset method                             | Mechanical spring  |
| Type of control                          | Direct   |
| Flow direction                           | Non-reversible   |
| Symbol                                   | 00991513   |
| Valve function                           | 2/2, closed, monostable  |
| Operating pressure                       | 0.3 MPa ... 1.6 MPa  |
| Operating pressure                       | 3 bar ... 16 bar   |
| b-value                                  | 0.46   |
| C value                                  | 4.5 l/sbar   |
| Standard nominal flow rate               | 1000 l/min   |
| Operating medium                         | Compressed air as per ISO 8573-1:2010 [7:4:4]<br>Inert gas         |
| Information on operating and pilot media | Operation with oil lubrication possible (required for further use) |
| Corrosion resistance class (CRC)         | 2 - Moderate corrosion stress                                      |
| LABS (PWIS) conformity                   | VDMA24364-B1/B2-L  |
| Air quality class at the output          | Compressed air as per ISO 8573-1:2010 [7:4:4]<br>Inert gas         |
| Temperature of medium                    | -10 °C ... 60 °C   |
| Ambient temperature                      | -10 °C ... 60 °C   |
| Product weight                           | 126 g  |
| Type of mounting                         | Line installation  |
| Pneumatic connection 1                   | G1/8   |
| Pneumatic connection 2                   | G1/8   |
| Note on materials                        | RoHS-compliant   |
| Seals material                           | NBR  |
| Housing material                         | Die-cast aluminum  |