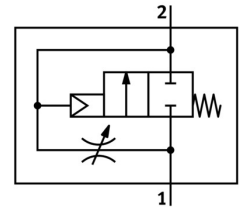


Shut off valve HEL-3/4-D-MIDI

Part number: 165081

FESTO



[PDF](#) General operating condition

Data sheet

Feature	Value
Exhaust air function	With flow control option
Actuation type	Pneumatic
Sealing principle	Soft
Mounting position	Any
Manual override	None
Structural design	Piston gate valve
Reset method	Mechanical spring
Type of control	Direct
Flow direction	Non-reversible
Symbol	00991513
Valve function	2/2, closed, monostable
Operating pressure	0.3 MPa ... 1.6 MPa
Operating pressure	3 bar ... 16 bar
b-value	0.48
C value	20.5 l/sbar
Standard nominal flow rate	3800 l/min
Operating medium	Compressed air as per ISO 8573-1:2010 [7:4:4] Inert gas
Information on operating and pilot media	Operation with oil lubrication possible (required for further use)
Corrosion resistance class (CRC)	2 - Moderate corrosion stress
LABS (PWIS) conformity	VDMA24364-B1/B2-L
Air quality class at the output	Compressed air as per ISO 8573-1:2010 [7:4:4] Inert gas
Temperature of medium	-10 °C ... 60 °C
Ambient temperature	-10 °C ... 60 °C
Product weight	270 g
Type of mounting	Line installation
Pneumatic connection 1	G3/4
Pneumatic connection 2	G3/4
Note on materials	RoHS-compliant
Seals material	NBR
Housing material	Die-cast aluminum