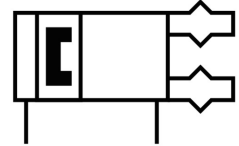
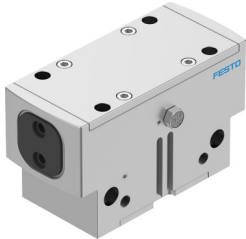


# Parallel gripper HGPD-63-A

Part number: 1132954

FESTO



 [General operating condition](#)

## Data sheet

Feature	Value
Size	63
Stroke per gripper jaw	16 mm
Max. interchangeability	≤0.2 mm
Max. gripper jaw angular play ax, ay	≤0.1 deg
Max. gripper jaw backlash Sz	≤0.02 mm
Rotational symmetry	≤0.2 mm
Pneumatic gripper repetition accuracy	≤0.05 mm
Number of gripper jaws	2
Actuator system	Pneumatic
Mounting position	Any
Mode of operation	Double-acting
Gripper function	Parallel
Gripping force backup	Without
Structural design	Inclined plane Positively driven motion sequence
Position sensing	For proximity sensor
Symbol	00991894
Operating pressure	3 bar ... 8 bar
Operating pressure for sealing air	0 bar ... 0.5 bar
Max. operating frequency of pneumatic gripper	≤2 Hz
Min. opening time at 6 bar	150 ms
Min. closing time at 6 bar	162 ms
Max. mass per external gripper finger	1340 g
Operating medium	Compressed air as per ISO 8573-1:2010 [7:4:4]
Information on operating and pilot media	Operation with oil lubrication possible (required for further use)
Corrosion resistance class (CRC)	2 - Moderate corrosion stress
LABS (PWIS) conformity	VDMA24364-B2-L
Degree of protection	IP65
Ambient temperature	5 °C ... 60 °C
Gripping force per gripper jaw at 6 bar, opening	1935 N
Gripping force per gripper jaw at 6 bar, closing	1856 N
Gripping force per gripper jaw at 6 bar, opening	967 N
Gripping force per gripper jaw at 6 bar, closing	928 N
Mass moment of inertia	80.33 kgcm <sup>2</sup>
Maximum force on gripper jaw Fz, static	3000 N

Feature	Value
Maximum torque on gripper jaw, Mx static	120 Nm
Maximum torque on gripper jaw, My static	80 Nm
Maximum torque on gripper jaw, Mz static	65 Nm
Relubrication interval for guidance elements	5 MioCyc
Product weight	3365 g
Type of mounting	Optionally: With internal thread and centering sleeve Via through-hole and centering sleeve With through-hole and dowel pin With internal thread and dowel pin
Sealing air pneumatic connection	M5
Pneumatic connection	G1/8
Note on materials	RoHS-compliant
Cover cap material	High-alloy stainless steel
Housing material	Aluminum, anodized
Gripper jaw material	Hardened steel