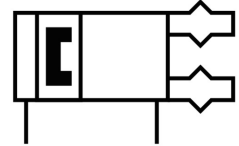
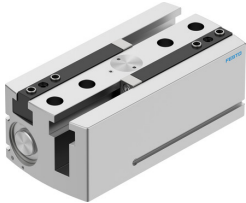


# Parallel gripper HGPL-40-80-A-B

Part number: 3361490

FESTO



[PDF](#) General operating condition

## Data sheet

Feature	Value
Size	40
Stroke per gripper jaw	80 mm
Max. interchangeability	<0.2 mm
Max. gripper jaw angular play ax, ay	<0.2 deg
Max. gripper jaw backlash Sz	<0.05 mm
Rotational symmetry	≤0.2 mm
Pneumatic gripper repetition accuracy	<0.03 mm
Number of gripper jaws	2
Actuator system	Pneumatic
Mounting position	Any
Mode of operation	Double-acting
Gripper function	Parallel
Gripping force backup	Without
Structural design	Twin piston Guide Piston gate valve T-shape Gear rack/pinion
Position sensing	For proximity sensor
Symbol	00991894
Operating pressure	3 bar ... 8 bar
Max. operating frequency of pneumatic gripper	<1 Hz
Min. opening time at 6 bar	414 ms
Min. closing time at 6 bar	438 ms
Max. mass per external gripper finger	420 g
Operating medium	Compressed air as per ISO 8573-1:2010 [7:4:4]
Information on operating and pilot media	Operation with oil lubrication possible (required for further use)
Corrosion resistance class (CRC)	2 - Moderate corrosion stress
LABS (PWIS) conformity	VDMA24364-B1/B2-L
Ambient temperature	5 °C ... 60 °C
Gripping force per gripper jaw at 6 bar, opening	1038 N
Gripping force per gripper jaw at 6 bar, closing	1216 N
Gripping force per gripper jaw at 6 bar, opening	519 N
Gripping force per gripper jaw at 6 bar, closing	608 N
Mass moment of inertia	198.87 kgcm <sup>2</sup>
Maximum force on gripper jaw Fz, static	2500 N

<b>Feature</b>	<b>Value</b>
Maximum torque on gripper jaw, Mx static	125 Nm
Maximum torque on gripper jaw, My static	80 Nm
Maximum torque on gripper jaw, Mz static	100 Nm
Relubrication interval for guidance elements	5 MioCyc
Product weight	4800 g
Type of mounting	With internal thread and centering sleeve Via through-hole and centering sleeve
Pneumatic connection	M5
Note on materials	RoHS-compliant
Housing material	Wrought aluminum alloy, smooth-anodized
Gripper jaw material	Hardened steel