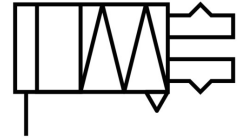
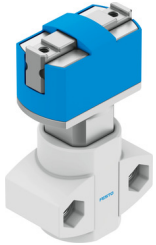


Parallel gripper HGPM-12-EZ-G6

Part number: 197568

FESTO



 [General operating condition](#)

Data sheet

Feature	Value
Size	12
Stroke per gripper jaw	3 mm
Max. interchangeability	0.2 mm
Max. gripper jaw angular play ax, ay	<0.5 deg
Max. gripper jaw backlash Sz	<0.03 mm
Pneumatic gripper repetition accuracy	≤0.05 mm
Number of gripper jaws	2
Actuator system	Pneumatic
Mode of operation	Single-acting Closed
Gripper function	Parallel
Gripping force backup	Without
Structural design	Inclined plane
Position sensing	None
Symbol	00991898
Operating pressure	4 bar ... 8 bar
Max. operating frequency of pneumatic gripper	4 Hz
Min. opening time at 6 bar	3 ms
Min. closing time at 6 bar	8.3 ms
Max. mass per external gripper finger	15 g
Operating medium	Compressed air as per ISO 8573-1:2010 [7:4:4]
Information on operating and pilot media	Operation with oil lubrication possible (required for further use)
Corrosion resistance class (CRC)	1 - Low corrosion stress
LABS (PWIS) conformity	VDMA24364-B2-L
Ambient temperature	5 °C ... 60 °C
Stroke compensation spring force	10 N ... 23 N
Gripping force per gripper jaw at 6 bar, closing	35 N
Gripping force per gripper jaw at 6 bar, opening	17.5 N
Mass moment of inertia	0.06674 kgcm ²
Maximum force on gripper jaw Fz, static	30 N
Maximum torque on gripper jaw, Mx static	0.5 Nm
Maximum torque on gripper jaw, My static	0.5 Nm
Maximum torque on gripper jaw, Mz static	0.5 Nm
Product weight	62 g
Type of mounting	With through-hole

Feature	Value
Pneumatic connection	M3
Note on materials	RoHS-compliant
Cover cap material	POM
Housing material	Wrought aluminum alloy, anodized
Gripper jaw material	High-alloy steel