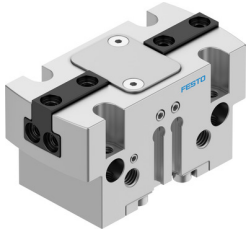


# Parallel gripper HGPT-20-A-B

Part number: 560198

FESTO



 [General operating condition](#)

## Data sheet

Feature	Value
Size	20
Stroke per gripper jaw	4 mm
Max. interchangeability	≤0.2 mm
Max. gripper jaw angular play ax, ay	≤0.1 deg
Max. gripper jaw backlash Sz	≤0.02 mm
Rotational symmetry	≤0.2 mm
Pneumatic gripper repetition accuracy	≤0.04 mm
Number of gripper jaws	2
Actuator system	Pneumatic
Mounting position	Any
Mode of operation	Double-acting
Gripper function	Parallel
Gripping force backup	Without
Structural design	Inclined plane Positively driven motion sequence
Position sensing	For proximity sensor
Symbol	00991894
Operating pressure	3 bar ... 8 bar
Operating pressure for sealing air	0 bar ... 0.5 bar
Max. operating frequency of pneumatic gripper	≤3 Hz
Min. opening time at 6 bar	22 ms
Min. closing time at 6 bar	30 ms
Max. mass per external gripper finger	50 g
Operating medium	Compressed air as per ISO 8573-1:2010 [7:4:4]
Information on operating and pilot media	Operation with oil lubrication possible (required for further use)
Corrosion resistance class (CRC)	2 - Moderate corrosion stress
LABS (PWIS) conformity	VDMA24364-B1/B2-L
Degree of protection	IP40
Ambient temperature	5 °C ... 60 °C
Gripping force per gripper jaw at 6 bar, opening	162 N
Gripping force per gripper jaw at 6 bar, closing	154 N
Gripping force per gripper jaw at 6 bar, opening	82 N
Gripping force per gripper jaw at 6 bar, closing	77 N
Mass moment of inertia	0.344 kgcm <sup>2</sup>
Maximum force on gripper jaw Fz, static	700 N

Feature	Value
Maximum torque on gripper jaw, Mx static	15 Nm
Maximum torque on gripper jaw, My static	15 Nm
Maximum torque on gripper jaw, Mz static	8 Nm
Relubrication interval for guidance elements	5 MioCyc
Product weight	135 g
Type of mounting	Optionally: With internal thread and centering sleeve Via through-hole and centering sleeve With through-hole and dowel pin With internal thread and dowel pin
Sealing air pneumatic connection	M5
Pneumatic connection	M5
Note on materials	RoHS-compliant
Cover cap material	High-alloy stainless steel
Housing material	Aluminum, anodized
Gripper jaw material	Hardened steel