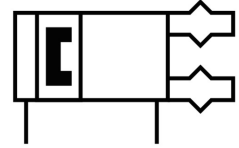
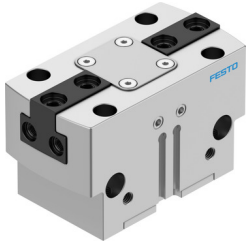



Parallel gripper HGPT-35-A-B-F

Part number: 560213

FESTO



 [General operating condition](#)

Data sheet

| Feature | Value |
|--|--|
| Size | 35 |
| Stroke per gripper jaw | 4 mm |
| Max. interchangeability | ≤0.2 mm |
| Max. gripper jaw angular play ax, ay | ≤0.1 deg |
| Max. gripper jaw backlash Sz | ≤0.02 mm |
| Rotational symmetry | ≤0.2 mm |
| Pneumatic gripper repetition accuracy | ≤0.05 mm |
| Number of gripper jaws | 2 |
| Actuator system | Pneumatic |
| Mounting position | Any |
| Mode of operation | Double-acting |
| Gripper function | Parallel |
| Gripping force backup | Without |
| Structural design | Inclined plane Positively driven motion sequence |
| Position sensing | For proximity sensor |
| Symbol | 00991894 |
| Operating pressure | 3 bar ... 8 bar |
| Operating pressure for sealing air | 0 bar ... 0.5 bar |
| Max. operating frequency of pneumatic gripper | ≤3 Hz |
| Min. opening time at 6 bar | 33 ms |
| Min. closing time at 6 bar | 70 ms |
| Max. mass per external gripper finger | 180 g |
| Operating medium | Compressed air as per ISO 8573-1:2010 [7:4:4] |
| Information on operating and pilot media | Operation with oil lubrication possible (required for further use) |
| Corrosion resistance class (CRC) | 2 - Moderate corrosion stress |
| LABS (PWIS) conformity | VDMA24364-B1/B2-L |
| Degree of protection | IP40 |
| Ambient temperature | 5 °C ... 60 °C |
| Gripping force per gripper jaw at 6 bar, opening | 1000 N |
| Gripping force per gripper jaw at 6 bar, closing | 934 N |
| Gripping force per gripper jaw at 6 bar, opening | 500 N |
| Gripping force per gripper jaw at 6 bar, closing | 467 N |
| Mass moment of inertia | 2.807 kgcm ² |
| Maximum force on gripper jaw Fz, static | 1800 N |

| Feature | Value |
|--|--|
| Maximum torque on gripper jaw, Mx static | 80 Nm |
| Maximum torque on gripper jaw, My static | 60 Nm |
| Maximum torque on gripper jaw, Mz static | 50 Nm |
| Relubrication interval for guidance elements | 5 MioCyc |
| Product weight | 490 g |
| Type of mounting | Optionally: With internal thread and centering sleeve Via through-hole and centering sleeve With through-hole and dowel pin With internal thread and dowel pin |
| Sealing air pneumatic connection | M5 |
| Pneumatic connection | M5 |
| Note on materials | RoHS-compliant |
| Cover cap material | High-alloy stainless steel |
| Housing material | Aluminum, anodized |
| Gripper jaw material | Hardened steel |