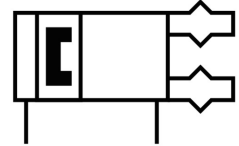
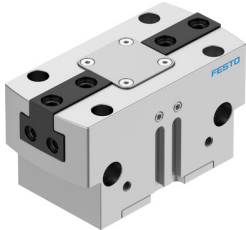


# Parallel gripper HGPT-40-A-B-F

Part number: 560219

FESTO



 [General operating condition](#)

## Data sheet

Feature	Value
Size	40
Stroke per gripper jaw	5 mm
Max. interchangeability	≤0.2 mm
Max. gripper jaw angular play ax, ay	≤0.1 deg
Max. gripper jaw backlash Sz	≤0.02 mm
Rotational symmetry	≤0.2 mm
Pneumatic gripper repetition accuracy	≤0.05 mm
Number of gripper jaws	2
Actuator system	Pneumatic
Mounting position	Any
Mode of operation	Double-acting
Gripper function	Parallel
Gripping force backup	Without
Structural design	Inclined plane Positively driven motion sequence
Position sensing	For proximity sensor
Symbol	00991894
Operating pressure	3 bar ... 8 bar
Operating pressure for sealing air	0 bar ... 0.5 bar
Max. operating frequency of pneumatic gripper	≤2 Hz
Min. opening time at 6 bar	60 ms
Min. closing time at 6 bar	64 ms
Max. mass per external gripper finger	310 g
Operating medium	Compressed air as per ISO 8573-1:2010 [7:4:4]
Information on operating and pilot media	Operation with oil lubrication possible (required for further use)
Corrosion resistance class (CRC)	2 - Moderate corrosion stress
LABS (PWIS) conformity	VDMA24364-B1/B2-L
Degree of protection	IP40
Ambient temperature	5 °C ... 60 °C
Gripping force per gripper jaw at 6 bar, opening	1446 N
Gripping force per gripper jaw at 6 bar, closing	1328 N
Gripping force per gripper jaw at 6 bar, opening	723 N
Gripping force per gripper jaw at 6 bar, closing	674 N
Mass moment of inertia	7.277 kgcm <sup>2</sup>
Maximum force on gripper jaw Fz, static	2500 N

Feature	Value
Maximum torque on gripper jaw, Mx static	100 Nm
Maximum torque on gripper jaw, My static	90 Nm
Maximum torque on gripper jaw, Mz static	75 Nm
Relubrication interval for guidance elements	5 MioCyc
Product weight	821 g
Type of mounting	Optionally: With internal thread and centering sleeve Via through-hole and centering sleeve With through-hole and dowel pin With internal thread and dowel pin
Sealing air pneumatic connection	M5
Pneumatic connection	M5
Note on materials	RoHS-compliant
Cover cap material	High-alloy stainless steel
Housing material	Aluminum, anodized
Gripper jaw material	Hardened steel