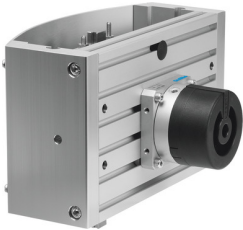


# Pick and place machine HSP-16-AP-SD-WR

Part number: 533609

FESTO



 General operating condition

## Data sheet

Feature	Value
Size	16
Maximum wait position module Z-stroke	25 mm
Y-stroke	90 mm ... 110 mm
Z-stroke	35 mm ... 50 mm
Z working stroke	20 mm
Cushioning	Pneumatic shock absorber at both ends Soft characteristic curve
Mounting position	Guide rail Vertical
Mode of operation	Double-acting
Structural design	Cross guide Swivel module Wait position module optionally on left Positively driven motion sequence
Position sensing	For proximity sensor
Protection against torsion/guide	Cross guide
Operating pressure	4 bar ... 8 bar
Minimum cycle time	0.8 s
Repetition accuracy	±0.01 mm
Operating medium	Compressed air as per ISO 8573-1:2010 [7:-:-]
Information on operating and pilot media	Operation with oil lubrication possible (required for further use)
LABS (PWIS) conformity	VDMA24364-B2-L
Ambient temperature	0 °C ... 60 °C
Max. torque Mx dynamic	2.4 Nm
Max. static moment Mx	10 Nm
Max. torque My dynamic	2.4 Nm
Max. static moment My	10 Nm
Max. torque Mz dynamic	2.4 Nm
Max. static moment Mz	10 Nm
Max. payload	1 kg
Theoretical force at 6 bar	50 N
Product weight	4600 g
Front unit mounting	With through-hole
Type of mounting	With through-hole With slot nuts
Wait position pneumatic connection	M5
Pneumatic connection	M5

<b>Feature</b>	<b>Value</b>
Base plate material	Wrought aluminum alloy
Cross guide material	Tempered steel
Side covers material	Wrought aluminum alloy