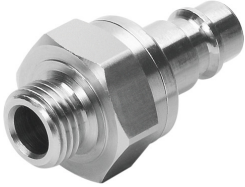


# Quick coupling plug KS4-1/4-A-R

Part number: 531677

FESTO



 General operating condition

## Data sheet

| Feature                                              | Value                                         |
|------------------------------------------------------|-----------------------------------------------|
| Nominal width                                        | 8 mm                                          |
| Operating pressure for entire temperature range      | -0.095 MPa ... 1.2 MPa                        |
| Operating pressure for entire temperature range      | -0.95 bar ... 12 bar                          |
| Operating pressure for entire temperature range      | -13.775 psi ... 174 psi                       |
| Standard nominal flow rate                           | 765 l/min                                     |
| Nominal flow rate standardized according to ISO 8778 | 829.3 l/min                                   |
| Operating medium                                     | Compressed air as per ISO 8573-1:2010 [7:-:-] |
| Information on operating and pilot media             | Operation with oil lubrication possible       |
| Corrosion resistance class (CRC)                     | 1 - Low corrosion stress                      |
| LABS (PWIS) conformity                               | VDMA24364-B1/B2-L                             |
| Ambient temperature                                  | -10 °C ... 60 °C                              |
| Nominal tightening torque                            | 9.5 Nm                                        |
| Tolerance for nominal tightening torque              | ± 15%                                         |
| Product weight                                       | 46 g                                          |
| Pneumatic connection 1                               | External thread G1/4                          |
| Note on materials                                    | RoHS-compliant                                |
| Seals material                                       | NBR                                           |
| Material of spring                                   | High-alloy stainless steel                    |
| Material of threaded seal                            | PA66-GF30/TPE-U                               |
| Information on materials                             | Brass                                         |
| Valve body material                                  | Brass                                         |