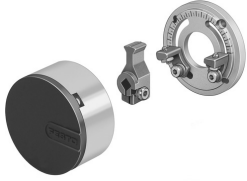


End stop kit KSM-8

Part number: 175834

FESTO



 [General operating condition](#)

Data sheet

Feature	Value
Size	8
Adjustment range of swivel angle	0 deg ... 180 deg
Swivel angle	180 deg
Mounting position	Any
Precision adjustment	-5 deg
Structural design	Stop lever
Position sensing	None
LABS (PWIS) conformity	VDMA24364-B1/B2-L
Ambient temperature	0 °C ... 60 °C
Product weight	70 g
Covering material	PA-reinforced
Stops material	High-alloy stainless steel
Housing material	Aluminum Anodized