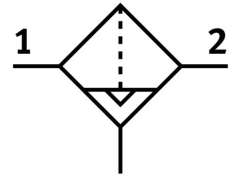



Fine filter LFMB-1/2-D-MAXI-A

Part number: 186474

FESTO



 General operating condition

Data sheet

Feature	Value
Series	D
Size	Maxi
Structural design	Fiber filter
Grade of filtration	1 µm
Condensate drain	Fully automatic
Symbol	00991520
Operating pressure	2 bar ... 12 bar
Operating medium	Compressed air as per ISO 8573-1:2010 [6:8:4] Inert gas
Air quality class at the output	Compressed air as per ISO 8573-1:2010 [5:7:3] Inert gas
Max. standard flow rate for air quality class	2400 l/min
Min. standard flow rate for air quality class	800 l/min
Filter efficiency	99.99 %
Max. condensate volume	80 ml
Bowl guard	Metal bowl guard
Corrosion resistance class (CRC)	2 - Moderate corrosion stress
LABS (PWIS) conformity	VDMA24364-B1/B2-L
Temperature of medium	1.5 °C ... 60 °C
Ambient temperature	-10 °C ... 60 °C
Storage temperature	-10 °C ... 60 °C
Residual oil content	0.5 mg/m ³
Type of mounting	Optionally: Line installation With accessories
Mounting position	Vertical +/- 5°
Pneumatic connection 1	G1/2
Pneumatic connection 2	G1/2
Housing material	Die-cast zinc
Compressed air filter material	Borosilicate fiber
Material of bowl	PC
Note on materials	RoHS-compliant
Product weight	1200 g