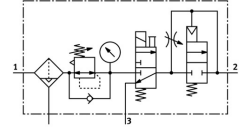
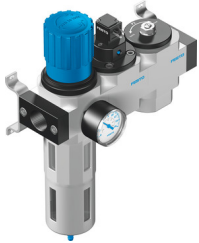


# Air preparation unit LFR-1/2-D-DI-MAXI-KD-A

Part number: 192457

FESTO



## Data sheet

General operating condition

| Feature                          | Value   |
|----------------------------------|---|
| Size                             | Maxi  |
| Series                           | D   |
| Actuator lock                    | Rotary knob with detent   |
| Mounting position                | Vertical +/- 5°   |
| Grade of filtration              | 40 µm   |
| Condensate drain                 | Fully automatic   |
| Structural design                | Shut off valve<br>Filter regulator with pressure gauge<br>Safety start-up valve |
| Max. condensate volume           | 43 ml   |
| Bowl guard                       | Metal bowl guard  |
| Symbol                           | 00991767  |
| Pressure gauge                   | with pressure gauge   |
| Operating pressure               | 0.3 MPa ... 1.2 MPa   |
| Operating pressure               | 3 bar ... 12 bar  |
| Operating pressure               | 43.5 psi ... 174 psi  |
| Pressure regulation range MPa    | 0.25 MPa ... 1.2 MPa  |
| Pressure regulation range        | 2.5 bar ... 12 bar  |
| Pressure regulation range psi    | 36.25 psi ... 174 psi   |
| Standard nominal flow rate       | 3000 l/min  |
| Operating medium                 | Compressed air as per ISO 8573-1:2010 [:-:-]<br>Inert gas                       |
| Corrosion resistance class (CRC) | 2 - Moderate corrosion stress   |
| LABS (PWIS) conformity           | VDMA24364-B1/B2-L   |
| Air quality class at the output  | Compressed air as per ISO 8573-1:2010 [6:8:4]<br>Inert gas                      |
| Temperature of medium            | -10 °C ... 60 °C  |
| Ambient temperature              | -10 °C ... 60 °C  |
| Product weight                   | 3300 g  |
| Type of mounting                 | Optionally:<br>Line installation<br>With accessories                            |
| Pneumatic connection 1           | G1/2  |
| Pneumatic connection 2           | G1/2  |
| Housing material                 | Die-cast zinc   |
| Material of bowl                 | PC  |