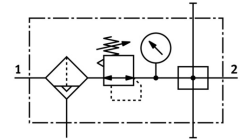


Air preparation unit LFR-1/2-D-MIDI-KA-A

Part number: 185716

FESTO



[PDF](#) General operating condition

Data sheet

| Feature | Value |
|----------------------------------|--|
| Size | Midi |
| Series | D |
| Actuator lock | Rotary knob with detent |
| Mounting position | Vertical +/- 5° |
| Grade of filtration | 40 µm |
| Condensate drain | Fully automatic |
| Structural design | Branching module Filter regulator with pressure gauge |
| Max. condensate volume | 43 ml |
| Bowl guard | Metal bowl guard |
| Symbol | 00991552 |
| Pressure gauge | with pressure gauge |
| Operating pressure | 0.2 MPa ... 1.2 MPa |
| Operating pressure | 2 bar ... 12 bar |
| Operating pressure | 29 psi ... 174 psi |
| Pressure regulation range MPa | 0.05 MPa ... 1.2 MPa |
| Pressure regulation range | 0.5 bar ... 12 bar |
| Pressure regulation range psi | 7.25 psi ... 174 psi |
| Max. pressure hysteresis | 0.02 MPa |
| Max. pressure hysteresis | 0.2 bar |
| Max. pressure hysteresis | 2.9 psi |
| Standard nominal flow rate | 3050 l/min |
| Operating medium | Compressed air as per ISO 8573-1:2010 [:-:-] Inert gas |
| Corrosion resistance class (CRC) | 2 - Moderate corrosion stress |
| LABS (PWIS) conformity | VDMA24364-B1/B2-L |
| Air quality class at the output | Compressed air as per ISO 8573-1:2010 [7:8:4] Inert gas |
| Temperature of medium | -10 °C ... 60 °C |
| Ambient temperature | -10 °C ... 60 °C |
| Product weight | 1800 g |
| Type of mounting | Optionally: Line installation With accessories |
| Pneumatic connection 1 | G1/2 |
| Pneumatic connection 2 | G1/2 |
| Housing material | Die-cast zinc |

| Feature | Value |
|------------------|-------|
| Material of bowl | PC |