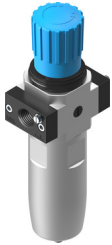



Filter regulator LFR-1/4-D-16-5M-O-MIDI-T3-EX4

Part number: 5271794

FESTO



 [General operating condition](#)

Data sheet

Feature	Value
Size	Midi
Series	D
Actuator lock	Rotary knob with detent
Mounting position	Vertical +/- 5°
Grade of filtration	5 µm
Condensate drain	Manually rotating
Structural design	Filter regulator without pressure gauge
Max. condensate volume	42 ml
Bowl guard	Integrated as metal bowl guard
Symbol	00991586
Pressure gauge	G1/4 prepared
Operating pressure	0.1 MPa ... 2 MPa
Operating pressure	1 bar ... 20 bar
Pressure regulation range	0.5 bar ... 16 bar
Max. pressure hysteresis	0.02 MPa
Max. pressure hysteresis	2.9 psi
Standard nominal flow rate	1150 l/min
CE marking (see declaration of conformity)	as per EU explosion protection directive (ATEX)
UKCA marking (see declaration of conformity)	acc. to UK EX instructions
Explosion protection certification outside the EU	EPL Db (GB) EPL Gb (GB)
Explosion prevention and protection	Zone 1 (ATEX) Zone 1 (UKEX) Zone 2 (ATEX) Zone 21 (ATEX) Zone 21 (UKEX) Zone 22 (ATEX)
ATEX category gas	II 2G
ATEX category for dust	II 2D
Type of ignition protection for gas	Ex h IIC T6 Gb X
Type of (ignition) protection for dust	Ex h IIIC T85°C Db X
Explosive ambient temperature	-40°C ≤ Ta ≤ +80°C
Operating medium	Compressed air as per ISO 8573-1:2010 [-:9:-] Inert gas
Information on operating and pilot media	Operation with oil lubrication possible (required for further use)
Corrosion resistance class (CRC)	3 - High corrosion stress

Feature	Value
LABS (PWIS) conformity	VDMA24364 zone III
Storage temperature	-40 °C ... 80 °C
Air quality class at the output	Compressed air as per ISO 8573-1:2010 [6:8:4] Inert gas
Temperature of medium	-40 °C ... 80 °C
Ambient temperature	-40 °C ... 80 °C
Product weight	1400 g
Type of mounting	Optionally: Line installation With accessories
Pneumatic connection 1	G1/4
Pneumatic connection 2	G1/4
Note on materials	RoHS-compliant
Housing material	Die-cast zinc
Material of bowl	Wrought aluminum alloy